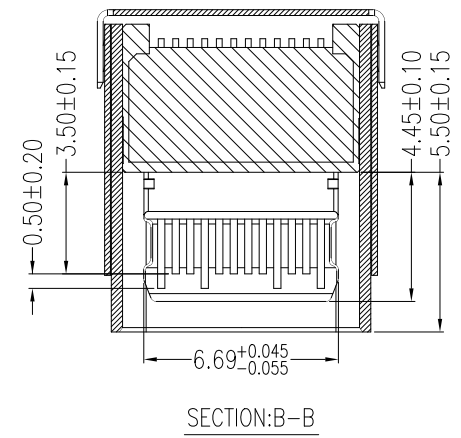
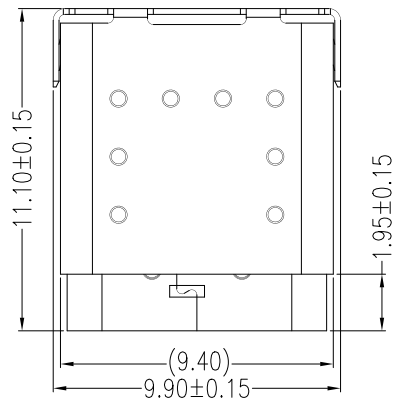


REV.	ECN.NO.	DATE
A	RELEASED	04/13-'23
B	Add Dimensions and Modify Notes	06/15-'23
C	Delete D/C and Modify Notes	11/29-'23



PIN ASSIGNMENT:

Pin No.	Signal Name	Pin No.	Signal Name
A1	GND	B12	GND
A2	SSTXp1	B11	SSRXp1
A3	SSTXn1	B10	SSRXn1
A4	VBUS	B9	VBUS
A5	CC1	B8	SBU2
A6	Dp1	B7	Dn2
A7	Dn1	B6	Dp2
A8	SBU1	B5	CC2
A9	VBUS	B4	VBUS
A10	SSRXn2	B3	SSTXn2
A11	SSRXp2	B2	SSTXp2
A12	GND	B1	GND

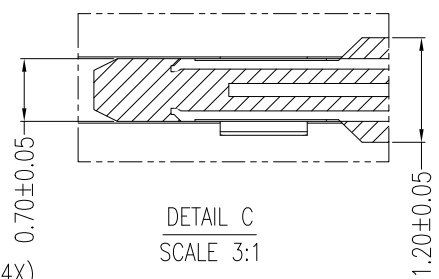
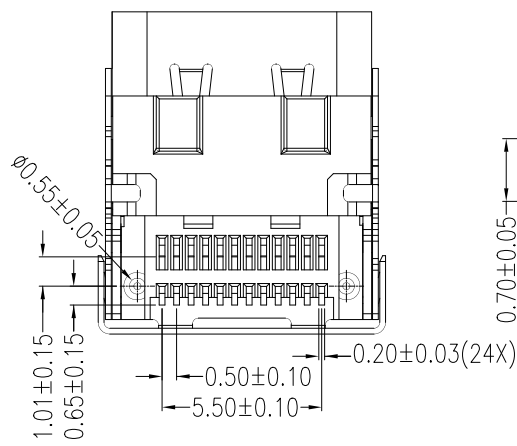
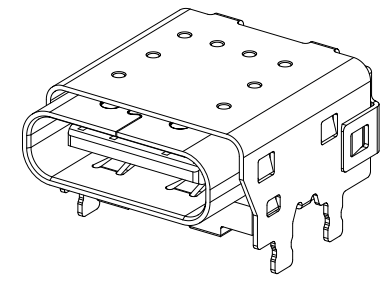
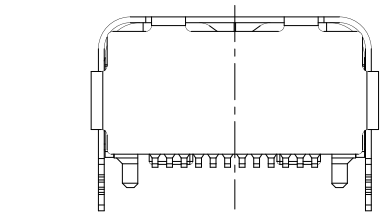
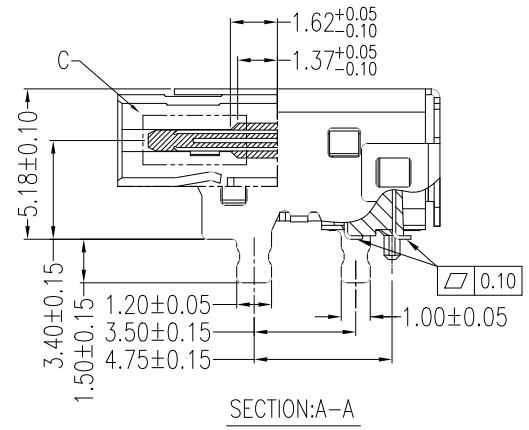
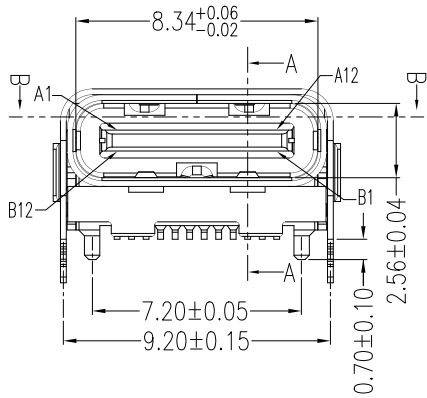
NOTES:

- *Material**
Housing: High temp chermoplastic, UL94 V-0.
Contacts: Copper Alloy.
Plating: Au Plating On Contact Area.
Sn(100u" Min.) Plating On Solder Tail.
Ni(50u" Min.) Underplating Overall.
Shell-in: Stainless steel.
Shell-out: Stainless steel.
Plating: Ni(50u" Min.) Plated Overall.
Shielding: Stainless steel.
- *Mechanical**
Insertion Force: 5~20N.
Withdrawal Force: 8~20N.
Durability: 10000 Cycles.

- *Electrical Specification**
Current Rating: Vbus pins 5A. CC2 pin 1.25A.
Other pins 0.25A.
Voltage Rating: 20V Max.
Contact Resistance: 40mΩ Max.
Insulation Resistance: 100MΩ Min.
Dielectric Withstanding Voltage: 100V AC Min.

- *Environmental**
Operating Temperature: -55°C to +85°C.

- *How To Order:**
WUSBC-24F3L1PH5N
N: No Mark
5: REEL
H: Halogen Free
P: Phosphor Bronze
1: Black
L: LCP
3: Dual SMT(CH=3.40)
Au: A:1u"; F:30u"
Number Of Contacts
USB Type-c



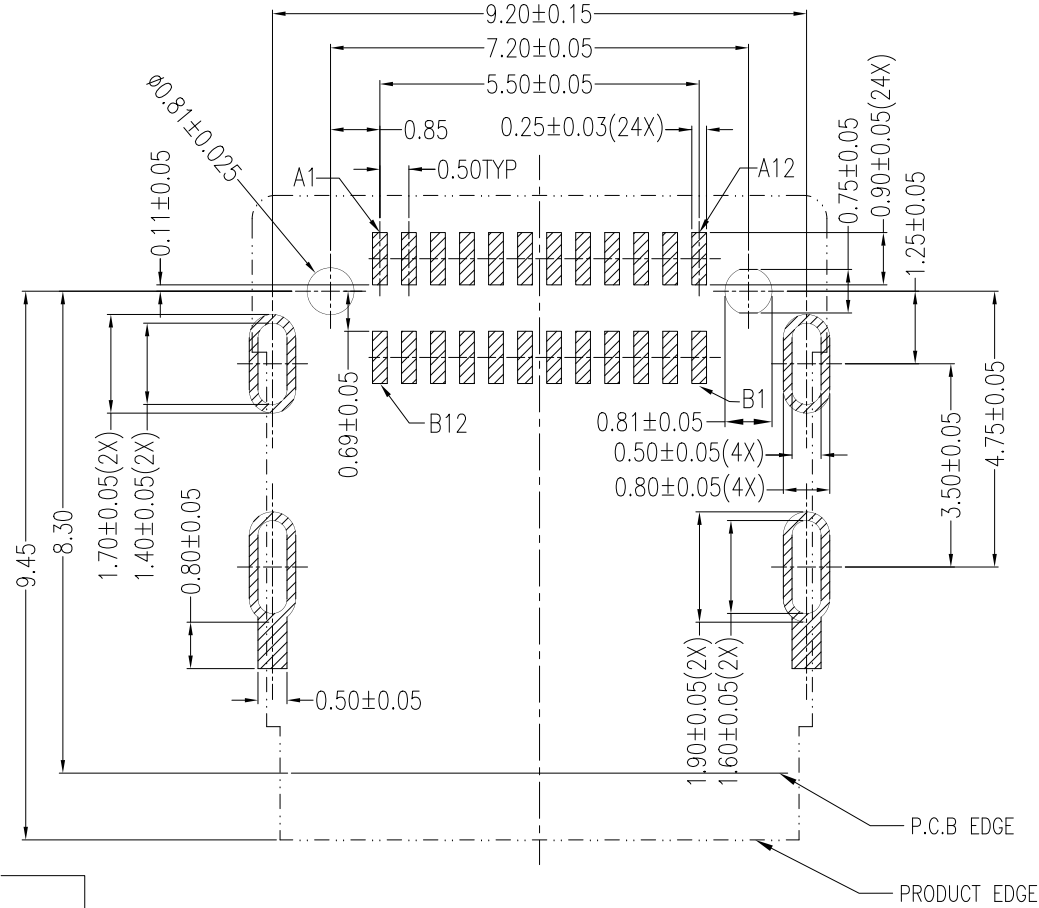
Units	mm	Scale	4:1	Drawing By	Date
				wwy	11/29-'23
Tolerance Unless Otherwise Specified				Reviewed By	Date
.X	~	±0.20		Charles	11/29-'23
.XX	~	±0.10		Approval By	Date
.XXX	~	±0.05		Nancy	11/29-'23
Angle	~	± 3°			

WIN WIN PRECISION IND. CO., LTD.

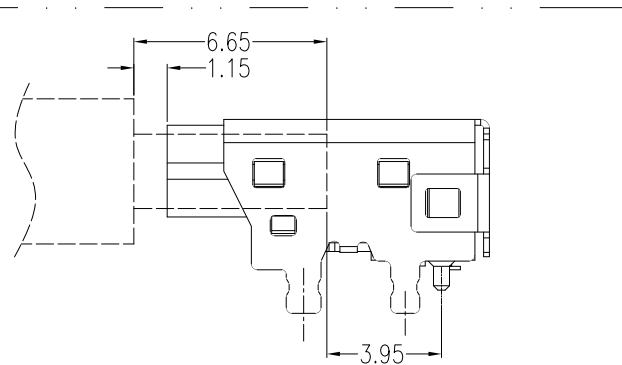
TEL: 886-2-22994155 FAX: 886-2-22994157

Date 11/29-'23
Sheet 1 of 2
Title USB4 Dual SMT (CH=3.40)
Drawing No. WUSBC-24FS-AN-N160
REV C

REV.	ECN.NO.	DATE
A	RELEASED	04/13-'23
B	Add Dimensions and Modify Notes	06/15-'23
C	Delete D/C and Modify Notes	11/29-'23



P.C.B LAYOUT(T=1.20mm)
COMPONENT SIDE



MATED CONDITION(REF.)

REV	Delete D/C and Modify Notes .			Drawing By	Date
Units	mm	Scale	4:1	WWY	11/29-'23
Tolerance Unless Otherwise Specified					
.X	~ ±0.20		Reviewed By	Charles	Date 11/29-'23
.XX	~ ±0.10		Approval By	Nancy	Date 11/29-'23
.XXX	~ ±0.05		Third Angle Projection		
Angle	~ ± 3°				

WIN WIN WIN WIN PRECISION IND. CO., LTD.
TEL: 886-2-22994155 FAX: 886-2-22994157

Date 11/29-'23
Sheet 2 of 2
Title USB4 Dual SMT (CH=3.40)

Drawing No. WUSBC-24PS-AN-N160 REV C