

PIN ASSIGNMENT:

Pin No.	Signal Name	Pin No.	Signal Name
A1	GND	B12	GND
A2	SSTXp1	B11	SSRXp1
A3	SSTXn1	B10	SSRXn1
A4	VBUS	B9	VBUS
A5	CC1	B8	SBU2
A6	Dp1	B7	Dn2
A7	Dn1	B6	Dp2
A8	SBU1	B5	CC2
A9	VBUS	B4	VBUS
A10	SSRXn2	B3	SSTXn2
A11	SSRXp2	B2	SSTXp2
A12	GND	B1	GND

NOTES:

*Material

Housing: High temp chermoplastic, UL94 V-0.

Contacts: Copper Alloy.

Plating: Au Plating On Contact Area.

Sn(100u" Min.) Plating On Solder Tail.

Ni(50u" Min.) Underplating Overall.

Shell-in: Stainless steel.

Shell-out: Stainless steel.

Plating: Ni(50u" Min.) Plated Overall.

Shielding: Stainless steel.

*Mechanical

Insertion Force: 5~20N.

Withdrawal Force: 8~20N.

Durability: 10000 Cycles.

*Electrical Specification

Current Rating: Vbus pins 5A. CC2 pin 1.25A.

Other pins 0.25A.

Voltage Rating: 20V Max.

Contact Resistance: 40mΩ Max.

Insulation Resistance: 100MΩ Min.

Dielectric Withstanding Voltage: 100V AC Min.

*Environmental

Operating Temperature: -55°C To +85°C.

*How To Order:

WU3CR-24A2L1PH3W

N: NO Mark W: "WinWin" Mark

3: Tray

H: Halogen Free

P: Phosphor Bronze

1: Black

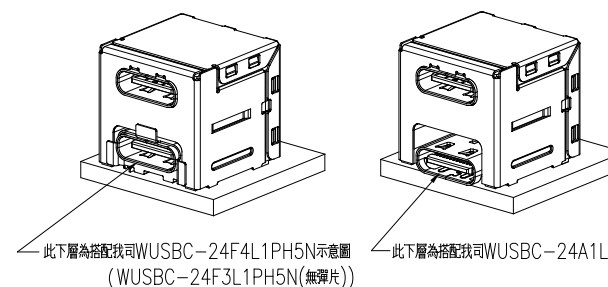
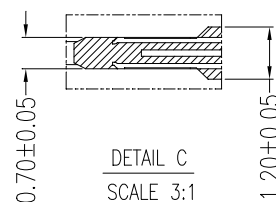
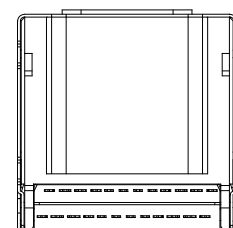
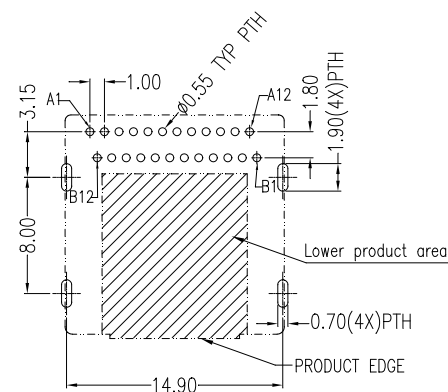
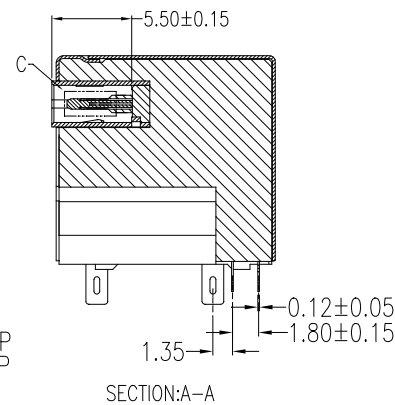
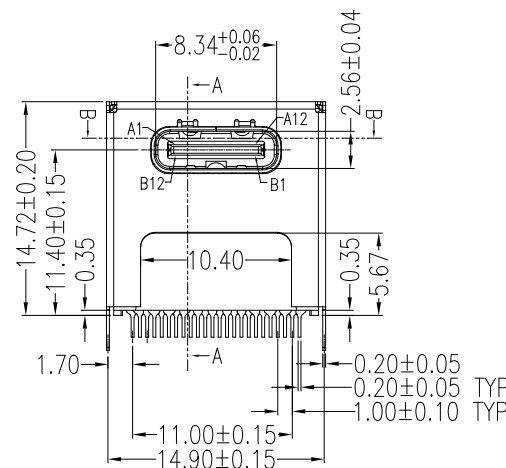
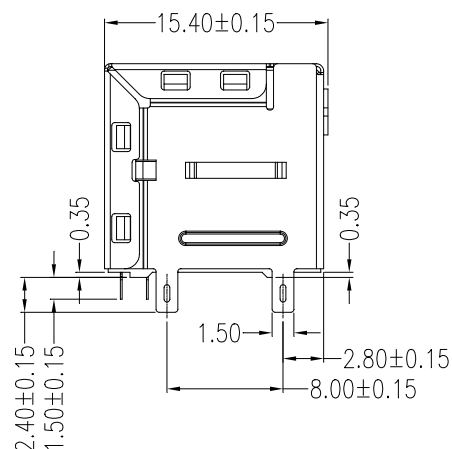
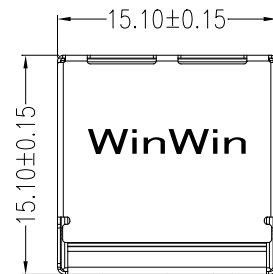
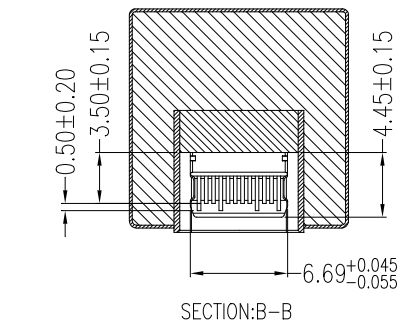
L: LCP

2: DIP (CH=11.40)

Au: A:1u"

Number Of Contacts

USB 3.2 GEN2 Type C



REV	Units	mm	Scale	2:1	Drawing By	Date	WIN WIN PRECISION IND. CO., LTD.			
					Wwy	06/11-'24	winning TEL: 886-2-22994155 FAX: 886-2-22994157			
					Reviewed By	Date	Date	06/11-'24	Title	USB 3.2 Gen2 Type-c 24PIN DIP High Rise (CH=11.40)
					Charles	06/11-'24	Sheet	1 of 1		
					Approval By	Date	Third Angle Projection			
					Nancy	06/12-'24	Drawing No.	WU3CR-24PS-AN-W163	REV	A