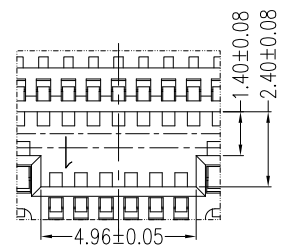
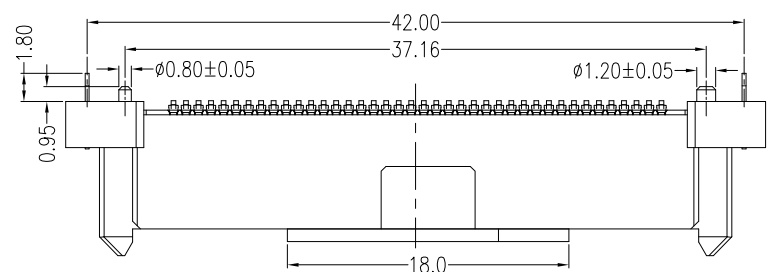
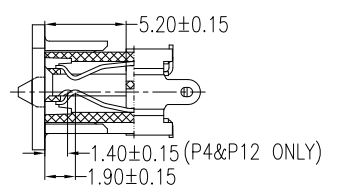
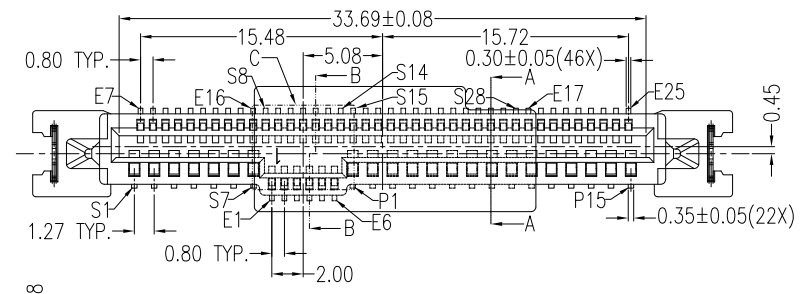


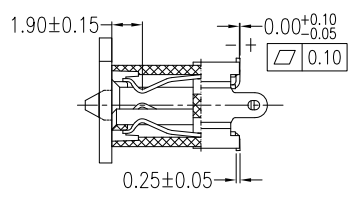
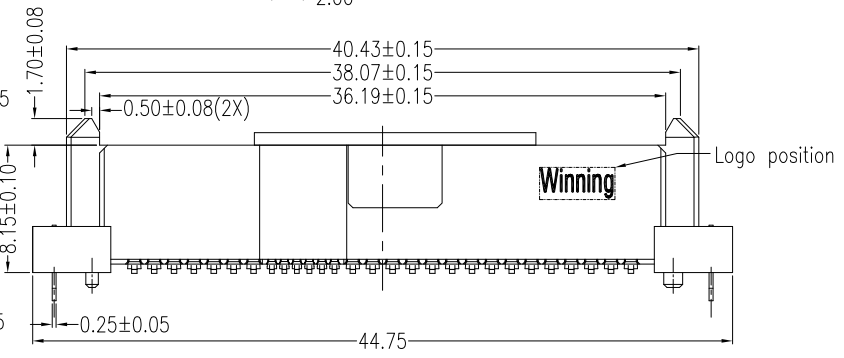
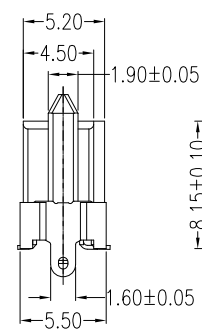
REV.	ECN.NO.	DATE
A	RELEASED	07/06-'18
B	Modify Withdrawal Force	08/20-'18
C	Modify P.C.B LAYOUT thickness	12/25-'20



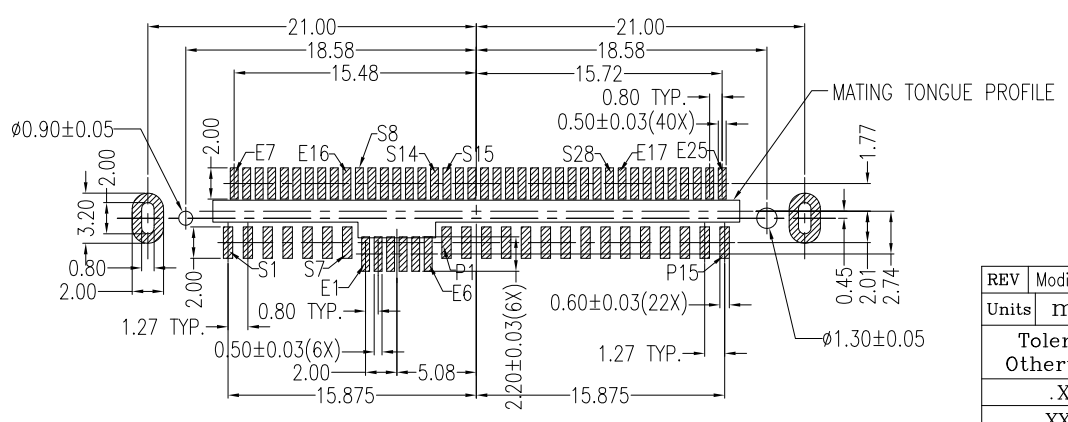
DETAIL C
SCALE 2:1



SECT A-A



SECT B-B



P.C.B LAYOUT (T=1.60mm)
COMPONENT SIDE

NOTES:

*Material

Housing: LCP, UL 94V-0 rated,
Contact: Phosphor Bronze;
Plating: Au plating on contact area;
Sn(100u" Min) plating on solder tail;
Ni(50u" Min.) underplating overall.
Harpoon: Brass;
Plating: Sn(100u" Min) plating on solder tail;
Ni(50u" Min.) underplating overall.

*Mechanical

Insertion Force: 59N max.
Withdrawal Force: 6N min.
Durability: 500 cycles

*Electrical Specification

Current Rating: 1.5 Ampere per contact;
Contact Resistance: 30 mΩ max.
Insulation Resistance: 1000 MΩ min.
Dielectric Withstanding Voltage: 500 VAC.

*Environmental

Operating Temperature: 0°C to +55°C

*How to order

WSFF-68F1L1PHW5

- 5:Reel
- W:Winning Mark; N:No Mark
- H:Halogen Free+RoHs-Compliance
- P:Phosphor Bronze
- 1:Black
- L:LCP
- 1:SMT Type(Straight Metal Posts)
- Au: A:1u" D:15u" F:30u"
- Number of Contacts
- Series No.

REV	Modify P.C.B LAYOUT thickness		Drawing By	Date	WIN WIN PRECISION IND. CO., LTD	
Units	mm	Scale	CXS	12/25-'20	TEL: 886-2-2299455 FAX: 886-2-22994157	
Tolerance Unless Otherwise Specified			Reviewed By	Date	Date	Title SAS/PCIe 68P Straight SMT Type (Straight Metal Posts)Female
.X	~	±0.35	LZX	12/25-'20	12/25-'20	
.XX	~	±0.25	Approval By	Date	1 of 1	
.XXX	~	±0.15	Nancy	01/04-'21	Sheet	
Angle	~	± 3°			Third Angle Projection	Drawing No. WSFF-68PS-AN-W490
					REV	C