

REV.	ECN.NO.	DATE
A	RELEASED	08/28-'08
E	Modify Notes	10/16-'13
F	ADD Packing:REEL	04/28-'18

Notes:

***Material**

Housing: LCP, UL 94V-0 rated, Color: Black;
 Contact: Brass;
 Plating: Au Plating On Contact Area;
 Sn(100u" Min.) Plating On Solder Tail;
 Ni(40u" Min.) Underplating Overall
 Harpoon: Brass;
 Plating: Sn(100u" Min) Plating Overall;
 Ni(50u" Min.) Underplating Overall

***Mechanical**

Insertion Force: 45N max.
 Withdrawal Force: 10N min.
 Durability: 500 cycles

***Electrical Specification**

Current Rating: 1.5 Ampere per contact;
 Contact Resistance: 30 mΩ max.
 Insulation Resistance: 1000 MΩ min.
 Dielectric Withstanding Voltage: 500 V AC.

***Environmental**

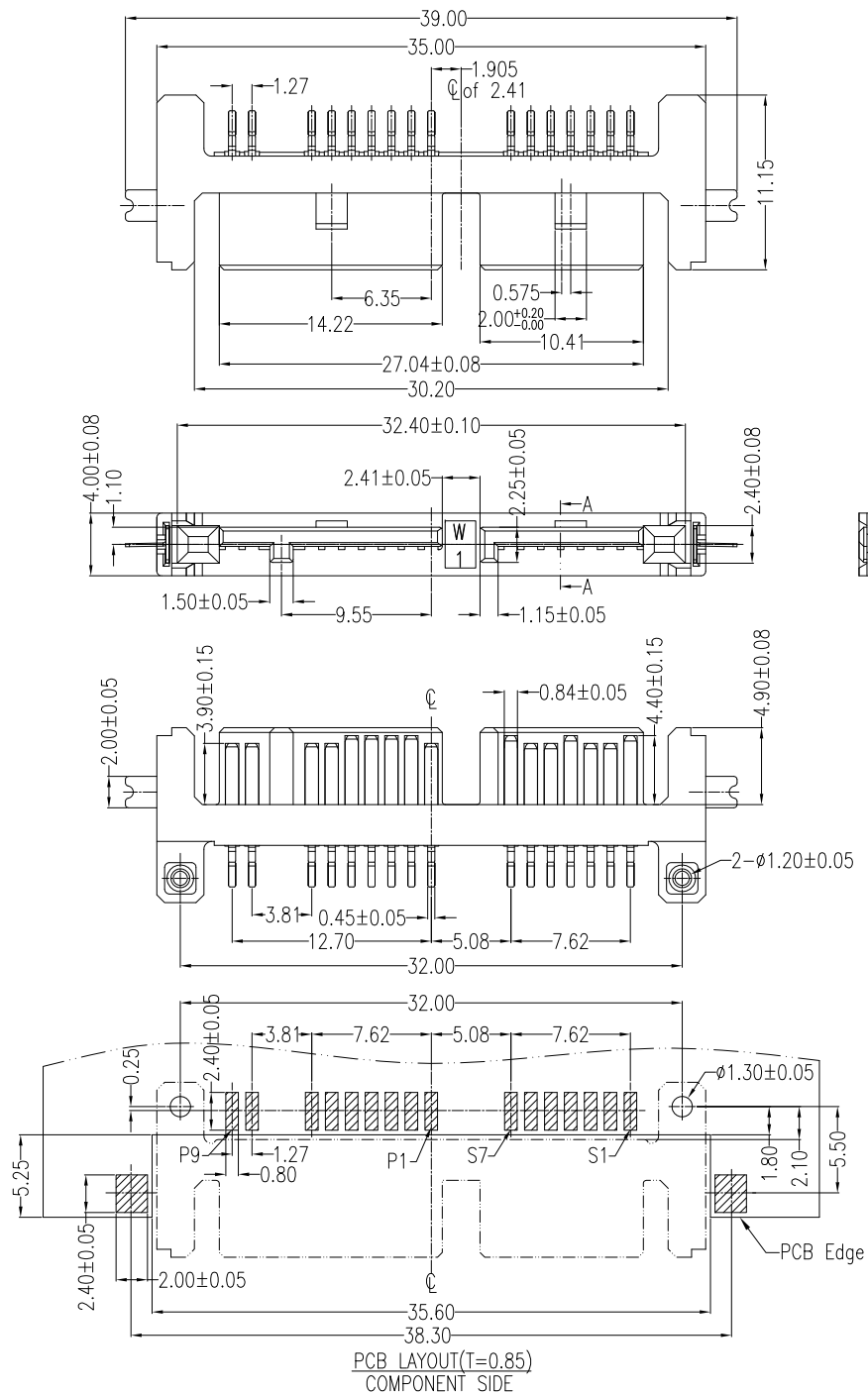
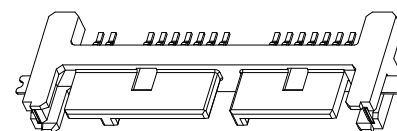
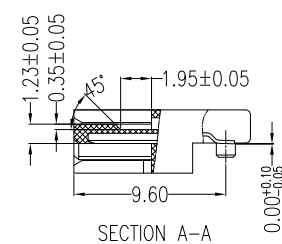
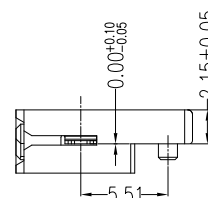
Operating Temperature: -55°C to +85°C

***How to Order:**

WATV-16D3L1BU3
 5: Reel 3: Tray
 U: Lead Free H:Halogen Free
 B: Brass
 1: Black
 L: LCP
 3: SMT
 A:>0.8u";D:15u";F:30u"
 NO. of Contacts
 Series No.

Pin No.	Signal Name
S1	GND
S2	RX+
S3	RX-
S4	GND
S5	TX-
S6	TX+
S7	GND

Pin No.	Power Line Designation
P1	+3.3V
P2	+3.3V
P3	GND
P4	GND
P5	+5.5V
P6	+5.5V
P7	DAS/DSS
P8	Optional
P9	Optional



REV ADD Packing:REEL

Units	mm	Scale	1:1
Tolerance Unless Otherwise Specified			
.X	~	±0.35	
.XX	~	±0.25	
.XXX	~	±0.15	
Angle	~	± 3°	

Drawing By	Date
HXY	04/28-'18
Reviewed By	Date
LDF	04/28-'18
Approval By	Date
Nancy	05/09-'18

WINNING WIN WIN PRECISION IND. CO., LTD.
 TEL: 886-2-22994155 FAX: 886-2-22994157

Date	04/28-'18	Title	Serial ATA 7+7+2P SMT Male
Sheet	1 of 1		
Third Angle Projection		Drawing No.	WATV-16PS-AN-N224
REV	F		