

REV.	DESCRIPTION	DATE
A	RELEASED	01/21-'10
B	Modify Layout	05/11-'12
C	Modify Dimension & Notes	08/30-'12

Pin NO.	Power Name	Pin NO.	Power Name
P1	V33	P9	V5
P2	V33	P10	GND
P3	V33	P11	DAS/DSS
P4	GND	P12	GND
P5	GND	P13	V12
P6	GND	P14	V12
P7	V5	P15	V12
P8	V5		

Pin NO.	Signal Name
S1	GND
S2	A+
S3	A-
S4	GND
S5	B-
S6	B+
S7	GND

NOTES:

***Material**

Housing: LCP+50%GF, UL 94V-0 rated; Color: Black.
 Contact: Phosphor Bronze
 Plating: Au Plating On Contact Area, Sn(100u" Min.) Plating On Solder Tail, Ni(40u" Min.) Underplating Overall.
 Harpoon: Brass
 Plating: Sn(100u"Min)Plating Over Ni(50u"Min)

***Mechanical:**

Insertion Force: 45N Max.
 Withdrawal Force: 4N Min.
 Durability: 500cycles

***Electrical Specification**

Operation Voltage: 100 VAC Max.
 Current Rating: 1.5 Ampere per contact
 Contact Resistance: 30 mΩ Max.
 Insulation Resistance: 1000 MΩ Min.
 Dielectric Withstanding Voltage: 500 VAC

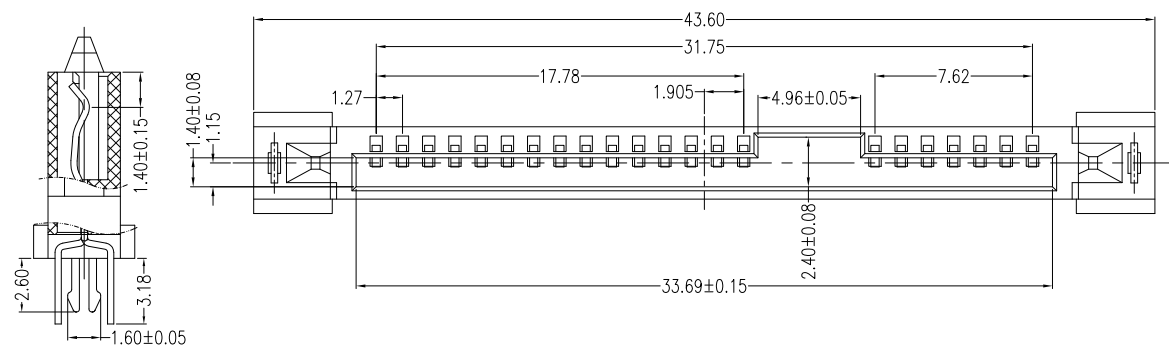
***Environmental**

Operating Temperature: -55°C to +85°C

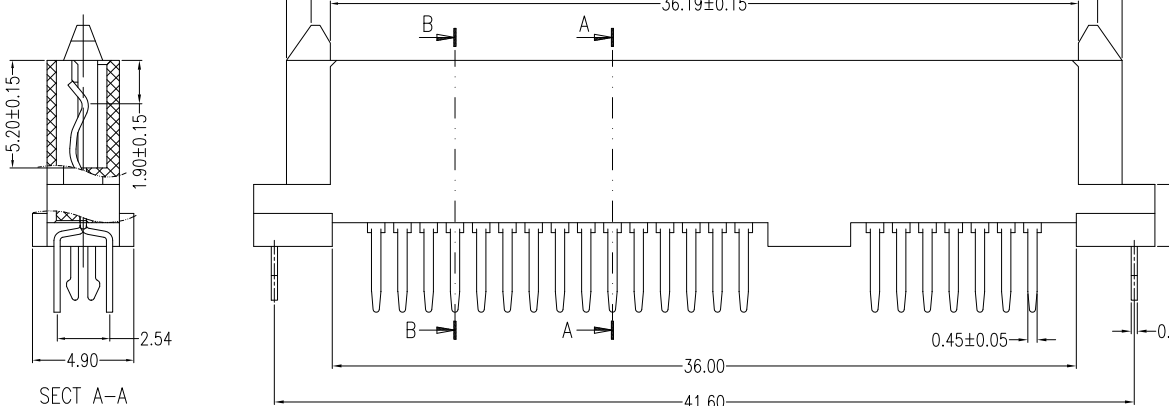
***How To Order:**

WATRS-22D6L1PU4

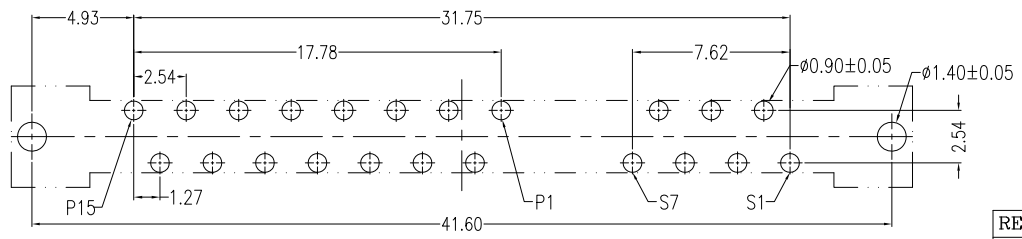
- 4:Tube
- U:Lead Free
- P:Phosphor Bronze
- 1:Black
- L:LCP
- 6:Standard Type(180°)(10.7mm)
Without Lock Key and Wall
Au A:>0.8u" D:15u" F:30u"
- NO. Of Contacts(7+15)
- Series No.



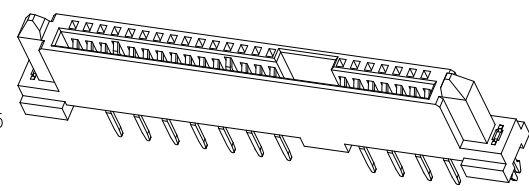
SECT B-B



SECT A-A



P.C.B LAYOUT(T=1.60mm)
COMPONENT SIDE



REV	Modify Dimension: 1.75±0.05--1.60±0.05,			Drawing By	Date	WIN WIN PRECISION IND. CO., LTD.			
	Units	mm	Scale	4:1	xiaowenyu	08/30-'12	TEL: 886-2-22994155 FAX: 886-2-22994157		
	Tolerance Unless Otherwise Specified				Reviewed By	Date	Date	Serial ATA 7+15P DIP 180° Without Lock Key and Wall Female	
	.X	~	±0.38		HQ	08/30-'12	06/28-'12	Title	
	.XX	~	±0.25		Approval By	Date	Sheet	1 of 1	
	.XXX	~	±0.20		Richard	08/30-'12	Third Angle Projection	Drawing No. WATRS-22PS-AN-369	
	Angle	~	± 3°					REV	C