

REV.	ECN.NO.	DATE
A	RELEASED	01/21-'11
D	Modify views and dimensions. 0.80 → 0.90	08/28-'18
E	Modify Title	06/04-'20

Pin NO.	Signal Name	Pin NO.	Power Name	Pin NO.	Power Name
S1	GND	P1	V3.3	P9	V5
S2	A+	P2	V3.3	P10	GND
S3	A-	P3	V3.3	P11	DAS/DSS
S4	GND	P4	GND	P12	GND
S5	B-	P5	GND	P13	V12
S6	B+	P6	GND	P14	V12
S7	GND	P7	V5	P15	V12
		P8	V5		

Notes:

**\*Material**

Housing: LCP, UL 94V-0 rated; Color: Black.  
 Contact: Phosphor Bronze  
 Plating: Au Plating on contact area  
 Sn(100u"Min) plating on solder Tail.  
 Ni(50u"Min) contact underplating overall.  
 Harpoon: Brass  
 Plating: Sn(100u"Min)Plating Over Ni(50u"Min)

**\*Mechanical**

Insertion Force: 45N Max.  
 Withdrawal Force: 4N Min.  
 Durability: 500 Cycles

**\*Electrical Specification**

Current Rating: 1.5 Ampere per Contact  
 Contact Resistance: 30mΩ Max.  
 Insulation Resistance: 1000MΩ Min.  
 Dielectric Withstanding Voltage: 500V AC

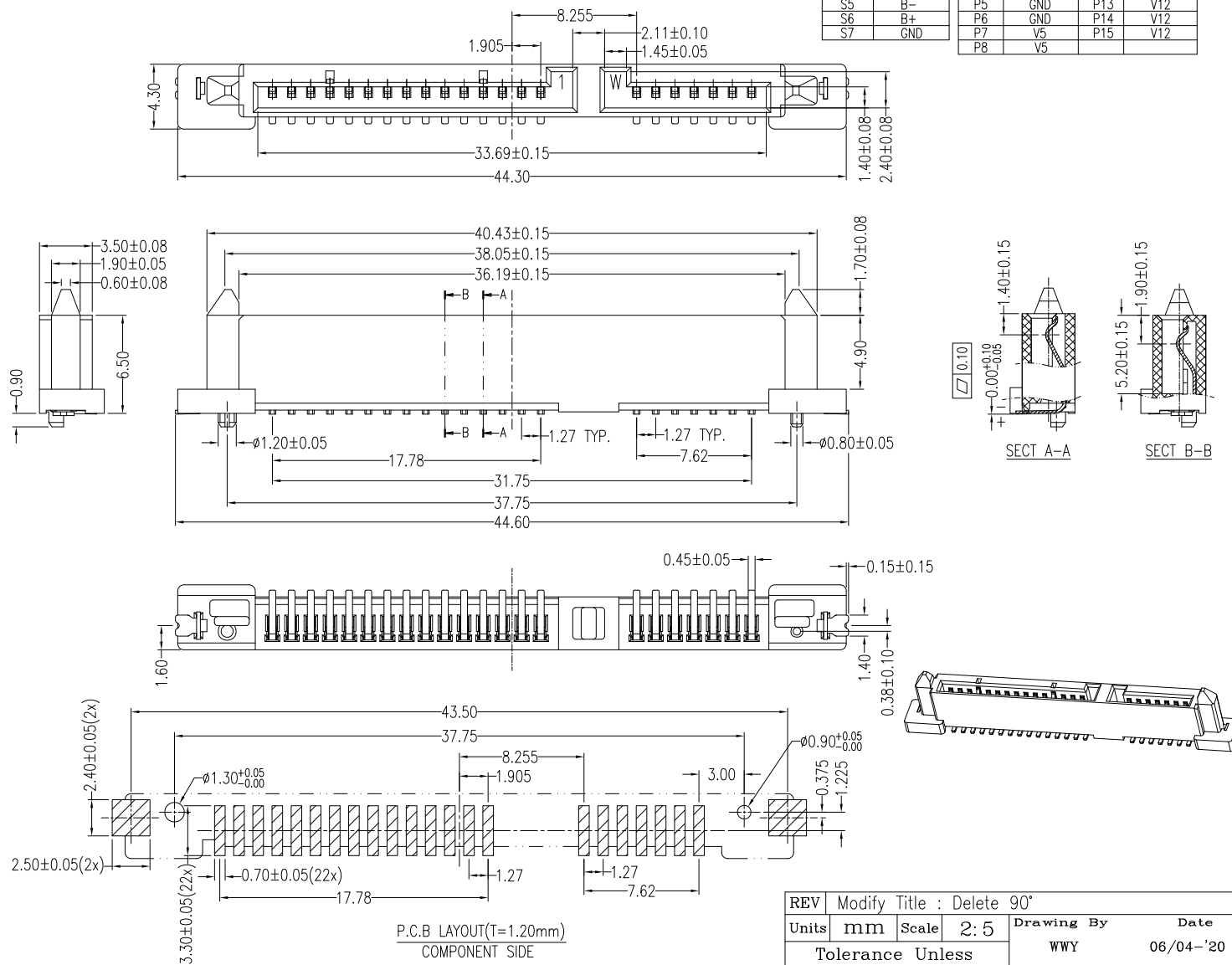
**\*Environmental**

Operating Temperature: -55°C to +85°C

**\*How to order:**

WATRF-22D2L1PH3

- 3:Tray 5:Reel
- H:Halogen Free
- P:Phosphor Bronze
- 1:Black
- L:LCP
- 2: Straight SMT(6.50)
- Au A:>0.8u" D:15u" F:30u"
- Number of Contacts
- Series No.



REV	Modify Title : Delete 90°			Drawing By	Date	<b>WIN WIN PRECISION IND. CO., LTD.</b> TEL: 886-2-22994155 FAX: 886-2-22994157
Units	mm	Scale	2:5	WWY	06/04-'20	
Tolerance Unless Otherwise Specified				Reviewed By	Date	Date 06/04-'20 Sheet 1 of 1 Title Vertical S ATA 7+15P SMT Type Female (6.50)
.X ±0.35				LDF	06/04-'20	
.XX ±0.25				Approval By	Date	Third Angle Projection Drawing No. WATRF-22PS-AN-N368 REV E
.XXX ±0.15				Nancy	06/09-'20	
Angle ± 3°						