

REV.	DESCRIPTION	DATE
A	RELEASED	04/10/03
E	Change Dimension	08/30-'12
F	Modify Insertion Force & Withdrawal Force	10/01-'14

Pin NO.	Power Name	Pin NO.	Power Name
P1	V3.3	P9	V5
P2	V3.3	P10	GND
P3	V3.3	P11	DAS/DSS
P4	GND	P12	GND
P5	GND	P13	V12
P6	GND	P14	V12
P7	V5	P15	V12
P8	V5		

Pin NO.	Signal Name
S1	GND
S2	A+
S3	A-
S4	GND
S5	B-
S6	B+
S7	GND

Notes:

***Material**

Housing: LCP, UL94 V-0; Color: Black
 Contact: Phosphor Bronze
 Plating: Au Plating On Contact Area,
 Sn(100u" Min.) Plating On Solder Tail,
 Ni(40u" Min.) Underplating Overall.
 Harpoon: Brass
 Plating: Sn(100u"Min)Plating Over Ni(50u"Min)

***Mechanical**

Insertion Force: 20N Max.
 Withdrawal Force: 4N Min.
 Durability: 500 Cycles

***Electrical Specification**

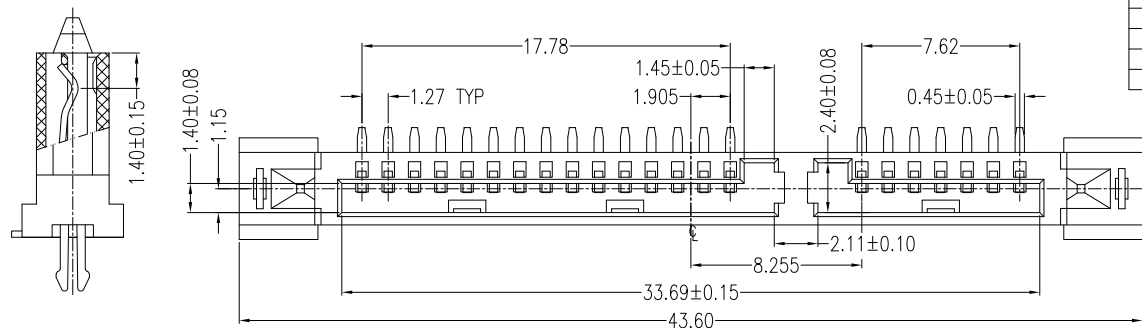
Current Rating: 1.5 Ampere Per Contact
 Contact Resistance: 30mΩ Max.
 Insulation Resistance: 1000MΩ Min.
 Dielectric Withstanding Voltage: 500V AC

***Environmental**

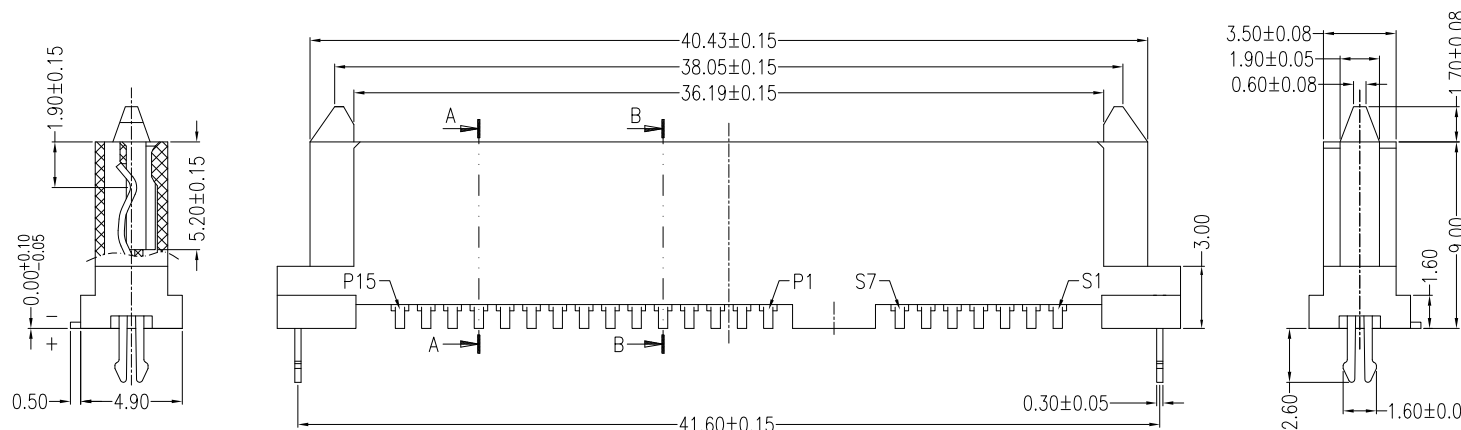
Operating Temperature: -55°C To +85°C

***How to Order**

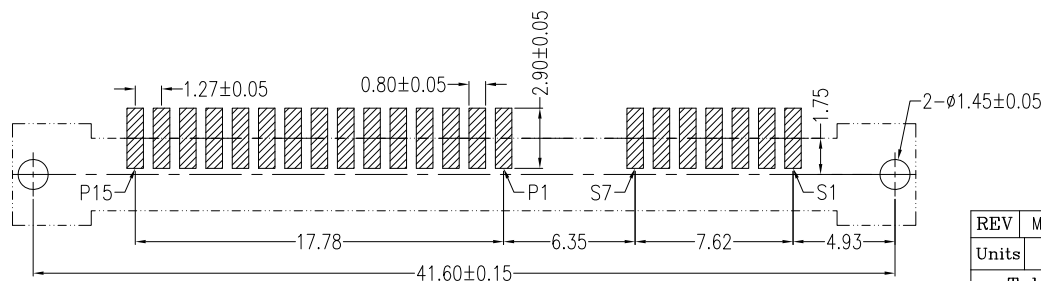
WATR-22DL1P3U
 W:Winning Mark; Blank:No Mark
 U:Lead Free
 3:SMT(High:10.70)
 P:Phosphor Bronze
 1:Black
 L:LCP
 Au A:>0.8u" D:15u" F:30u"
 NO. Of Contacts
 Series No.



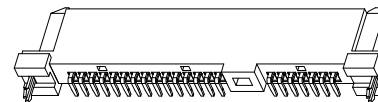
SECTION A-A



SECTION B-B



PCB LAYOUT(T=1.60mm)
COMPONENT SIDE



REV	Modify Insertion Force & Withdrawal Force.		Drawing By		Date	
Units	mm	Scale	Ares	10/01-'14	WIN WIN PRECISION IND. CO., LTD.	
Tolerance Unless Otherwise Specified			Reviewed By	Date	WINNING TEL: 886-2-22994155 FAX: 886-2-22994157	
.X	~	±0.35	Rosh	10/01-'14	Date	10/01-'14
.XX	~	±0.25	Approval By	Date	Sheet	1 of 1
.XXX	~	±0.15	Richard	10/02-'14	Third Angle Projection	Title
Angle	~	± 3°			WATR Stand SATA 7+15P SMT Type Female	
					Drawing No.	WATR-22PS-AN-NO28
					REV	F