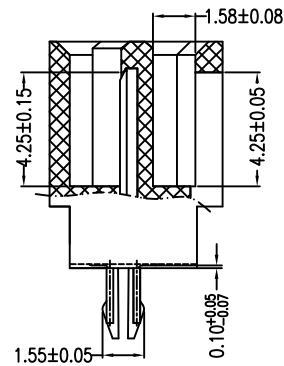
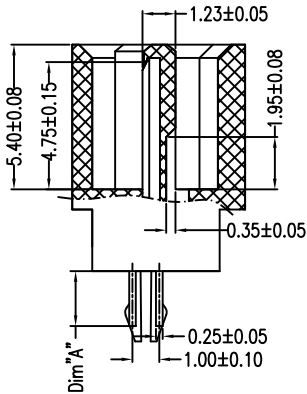
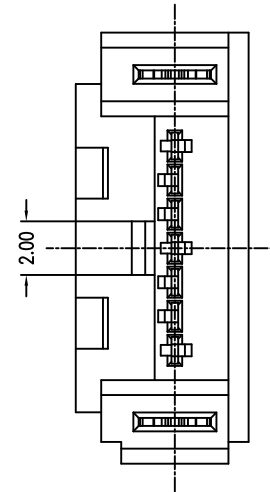
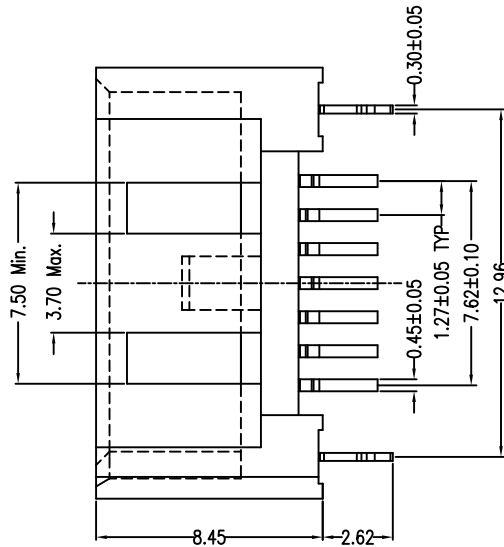
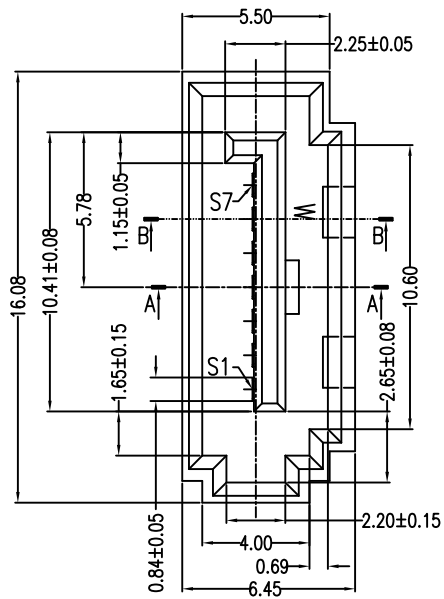


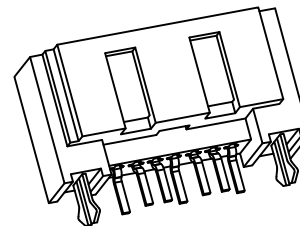
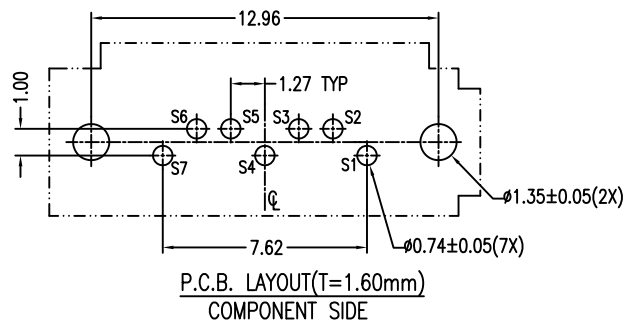
REV.	DESCRIPTION	DATE
A	Released	09/05-'03
U	Modify Dimensions	02/23-'23
V	Add dimensions:0.10±0.05	10/16-'23



Part Number	Dim*A'
WATM-07***A2B8***	2.10~2.25
WATM-07***A3B8***	3.30

Unit:mm

PIN	SIGNAL NAME
S1	GND
S2	A+
S3	A-
S4	GND
S5	B-
S6	B+
S7	GND



NOTES:

*Material

Housing: Nylon46 or LCP, UL 94V-0.
 Contact: Brass.
 Plating: Au plating on contact area.
 Sn (100u" Min.) plating on solder tail.
 Ni (40u" Min.) underplating overall.
 Harpoon: Brass.
 Plating: Sn (100u" Min.) Plating Overall.
 Ni (50u" Min.) underplating overall.

*Mechanical

Insertion Force: 45N Max.
 Withdrawal Force: 10N Min.
 Durability: 500 Cycles.

*Electrical Specification

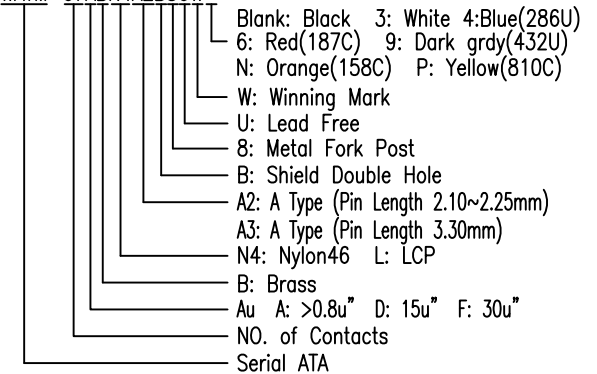
Current Rating: 1.5 Ampere Per Contact.
 Contact Resistance: 30mΩ Max.
 Insulation Resistance: 1000MΩ Min.
 Dielectric Withstanding Voltage: 500V AC.

*Environmental

Operating Temperature: -55°C to +85°C.

*How to order

WATM-07ABN4A2B8UW



REV	Add dimensions:0.10±0.05			Drawing By	Date	WIN WIN PRECISION IND. CO., LTD.	
Units	mm	Scale	7:2	LZX	10/16'23	TEL: 886-2-22994155	FAX: 886-2-22994157
Tolerance Unless Otherwise Specified				Reviewed By	Date	Date	Title
.X > ±0.35				Charles	10/17'23	10/13-'23	
.XX > ±0.25				Approval By	Date	Sheet	
.XXX > ±0.15				Nancy	10/20'23	1 of 1	SATA 7P Shield Double Hole
Angle > ± 3°						Third Angle Projection	DIP A Type (Male)
						Drawing No.	WATA-007MN-AN-N050
						REV	V