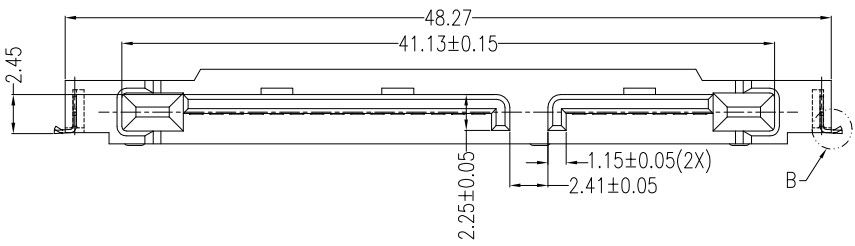


REV.	ECN.NO.	DATE
A	RELEASED	12/01-'06
C	Cancel the glass fiber	10/15-'13
D	Add dimensions	01/05-'21



Signal Segment	
Name	Type
S1	GND
S2	A+
S3	A-
S4	GND
S5	B-
S6	B+
S7	GND

Power Segment	
Name	Type
P1	V3.3
P2	V3.3
P3	V3.3
P4	GND
P5	GND
P6	GND
P7	V5
P8	V5
P9	V5
P10	GND
P11	DAS/DSS
P12	GND
P13	V12
P14	V12
P15	V12

**NOTES:**

**\*Material**

Housing: LCP, UL 94V-0 rated;  
 Contact: Brass;  
 Plating: Au plating on contact area,  
 Sn(100u" Min) plating on solder tail,  
 Ni(50u" Min) underplating over all;  
 Harpoon: Brass;  
 Plating: Sn(100u" Min) plating on solder tail,  
 Ni(50u" Min) underplating over all.

**\*Mechanical**

Insertion Force: 45N Max;  
 Withdrawal Force: 10N Min;  
 Durability: 500 cycles.

**\*Electrical Specification**

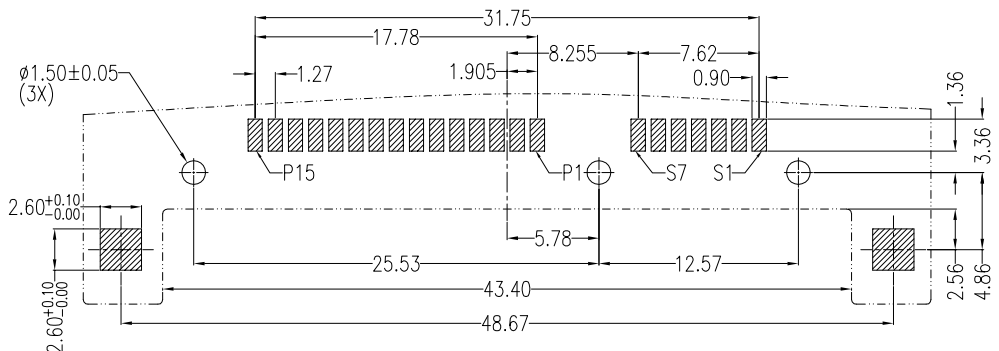
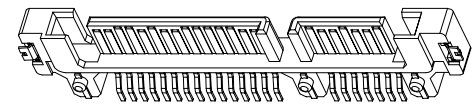
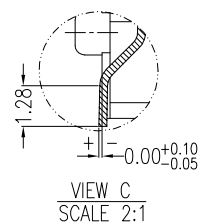
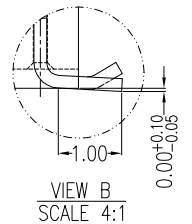
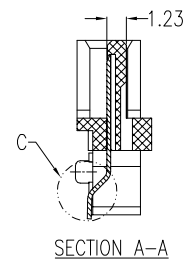
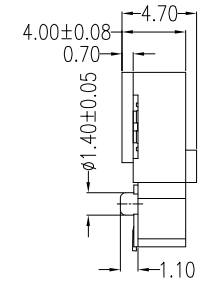
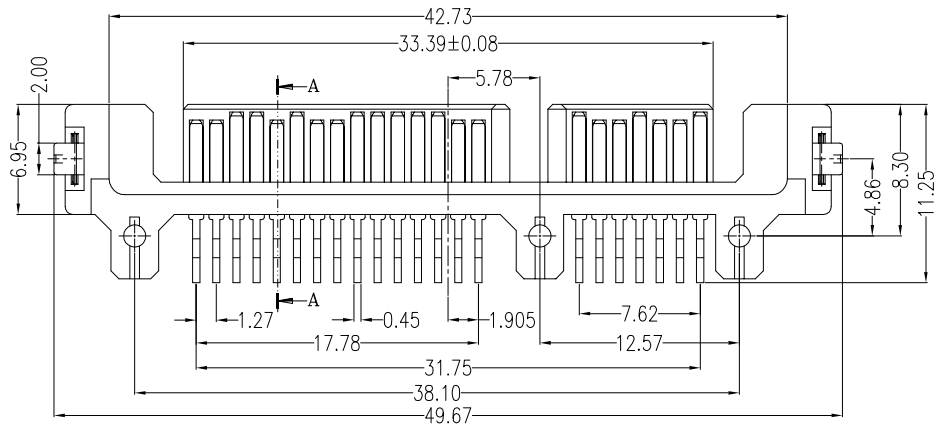
Current Rating: 1.5 Ampere per contact;  
 Contact Resistance: 30mΩ Max;  
 Insulation Resistance: 1000MΩ Min;  
 Dielectric Withstanding Voltage: 500V AC.

**\*Environmental**

Operating Temperature: -55°C to +85°C

**\*How to order**

WATHC-22D3L1BU\_3  
 3:Tray  
 Blank:No Mark  
 U:Lead Free  
 B:Brass  
 1:Black  
 L:LCP  
 3:SMT(90°)  
 Au A:>0.8u" D:15u" F:30u"  
 Number of Contacts  
 Series No.



PCB LAYOUT(T=1.60)  
COMPONENT SIDE

REV Add dimensions 2.45mm.				Drawing By		Date		WIN WIN PRECISION IND. CO., LTD.			
Units	mm	Scale	2:1	LZX	01/05-'21	WINNING		TEL: 886-2-22994155 FAX: 886-2-22994157			
Tolerance Unless Otherwise Specified				Reviewed By		Date		Date	01/05-'21	Title	Serial ATA 7+15P 90° SMT Male
.X ~ ±0.35				LZX		01/05-'21		Sheet	1 of 1		
.XX ~ ±0.25				Approval By		Date		Third Angle Projection		Drawing No.	WATHC-22PS-AN-W174
.XXX ~ ±0.15				Nancy		01/06-'21		REV			
Angle ~ ± 3°											