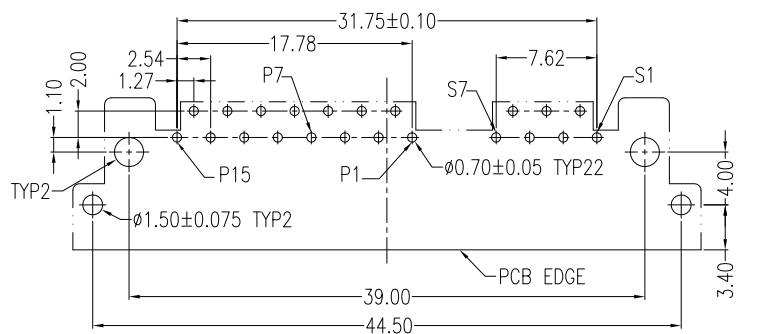
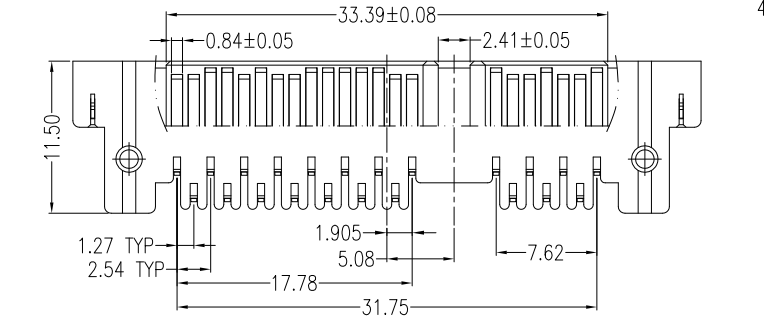
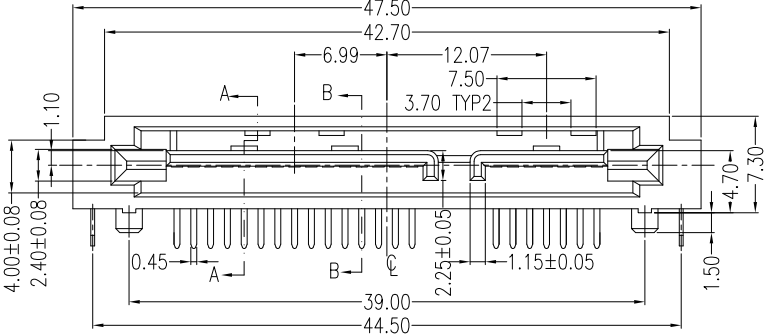
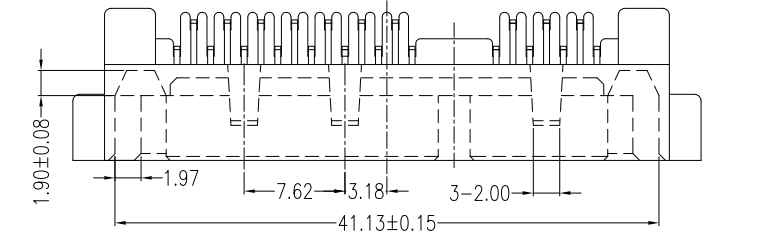


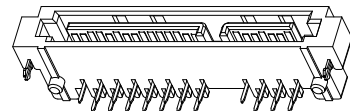
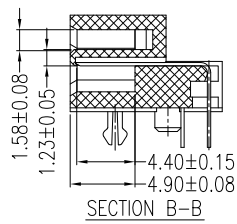
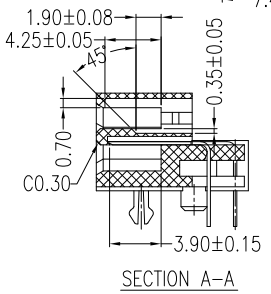
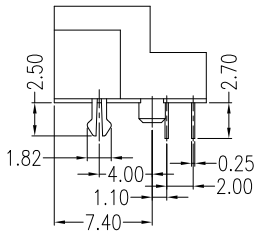
| REV. | ECN.NO.      | DATE      |
|------|--------------|-----------|
| A    | RELEASED     | 12/13-'05 |
| E    | Modify Notes | 07/16-'19 |
| F    | Modify Notes | 11/13-'19 |



P.C.B LAYOUT(T=1.60mm)  
COMPONENT SIDE

| Signal Segment |      |
|----------------|------|
| Name           | Type |
| S1             | GND  |
| S2             | A+   |
| S3             | A-   |
| S4             | GND  |
| S5             | B-   |
| S6             | B+   |
| S7             | GND  |

| Power Segment |      |      |         |
|---------------|------|------|---------|
| Name          | Type | Name | Type    |
| P1            | V3.3 | P9   | V5      |
| P2            | V3.3 | P10  | GND     |
| P3            | V3.3 | P11  | DAS/DSS |
| P4            | GND  | P12  | GND     |
| P5            | GND  | P13  | V12     |
| P6            | GND  | P14  | V12     |
| P7            | V5   | P15  | V12     |
| P8            | V5   |      |         |



NOTES:

\*Material

Housing: LCP UL 94V-0 rated, Color: Black;  
 Contact: Brass;  
 Plating: Au Plating on contact area,  
 Sn(100u" Min) plating on Solder tail,  
 Ni(40u" Min) underplating overall;  
 Harpoon: Brass  
 Plating: Sn(100u" Min.) Plating On Solder Tail;  
 Ni(50u" Min) underplating overall;

\*Mechanical

Insertion Force: 45N max.  
 Withdrawal Force: 10N min.  
 Durability: 500 cycles

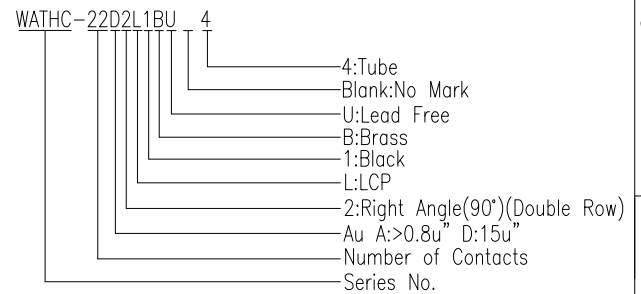
\*Electrical Specification

Current Rating: 1.5 Ampere per contact;  
 Contact Resistance: 30 mΩ max.  
 Insulation Resistance: 1000 MΩ min.  
 Dielectric Withstanding Voltage: 500 V AC.

\*Environmental

Operating Temperature: -55°C to +85°C

\*How to order



| REV                                  | Remove the spec of F:30u" |       |             | Drawing By  | Date      |
|--------------------------------------|---------------------------|-------|-------------|-------------|-----------|
| Units                                | mm                        | Scale | 5:3         | Rainy       | 11/13-'19 |
| Tolerance Unless Otherwise Specified |                           |       |             | Reviewed By | Date      |
| .X                                   | ~                         | ±0.35 | LDF         | 11/13-'19   |           |
| .XX                                  | ~                         | ±0.25 | Approval By | Date        |           |
| .XXX                                 | ~                         | ±0.15 | Nancy       | 11/15-'19   |           |
| Angle                                | ~                         | ± 3°  |             |             |           |

**WIN WIN PRECISION IND. CO., LTD.**  
 TEL: 886-2-22994155 FAX: 886-2-22994157

Date: 11/13-'19  
 Sheet: 1 of 1  
 Title: Serial ATA 7+15P Right Angle(90°)  
 Double Row DIP Male

Third Angle Projection  
 Drawing No: WATHC-22PS-AN-W140 REV F