

REV.	ECN.NO.	DATE
A	RELEASED	11/10-'14
B	Modification of nickel plating standard	08/31-'18

Notes:

**\*Material**  
 Housing: LCP, UL 94V-0 rated; Color: Black.  
 Contact: Phosphor Bronze  
 Plating: Au Plating on contact area  
 Sn(100u"Min) plating on solder Tail.  
 Ni(50u"Min) contact underplating overall.  
 Harpoon: Brass.  
 Plating: Sn(100u" Min.)plating over Ni(50u" Min.).

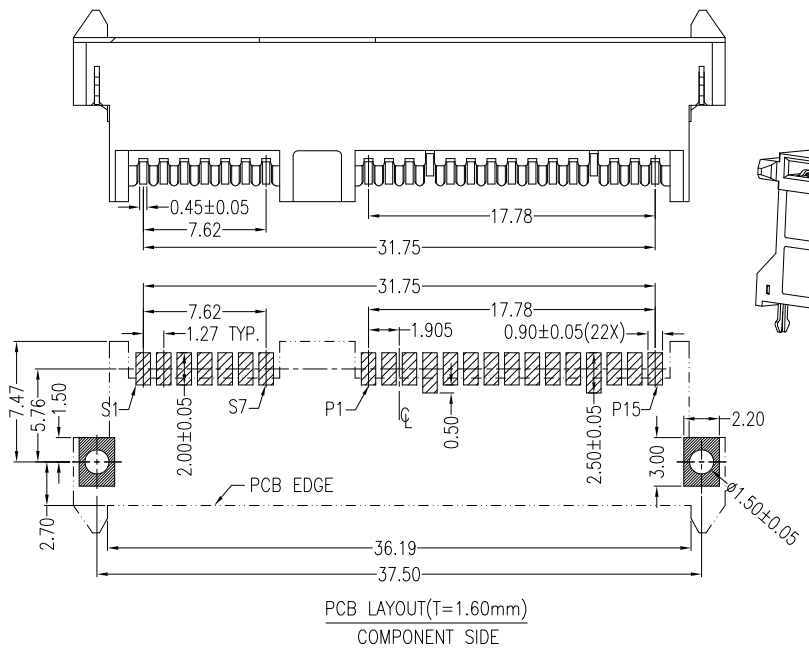
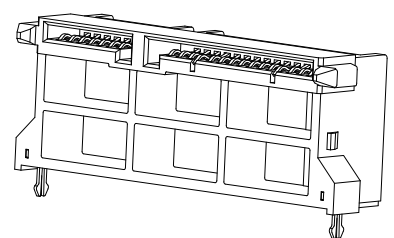
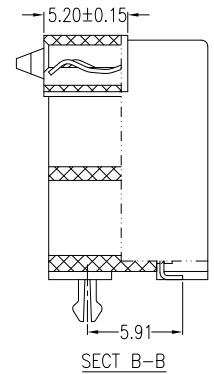
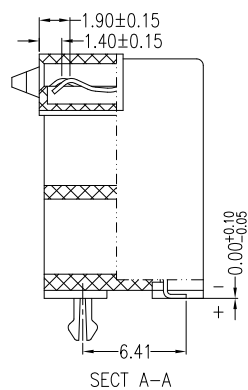
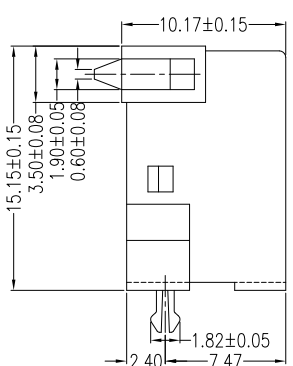
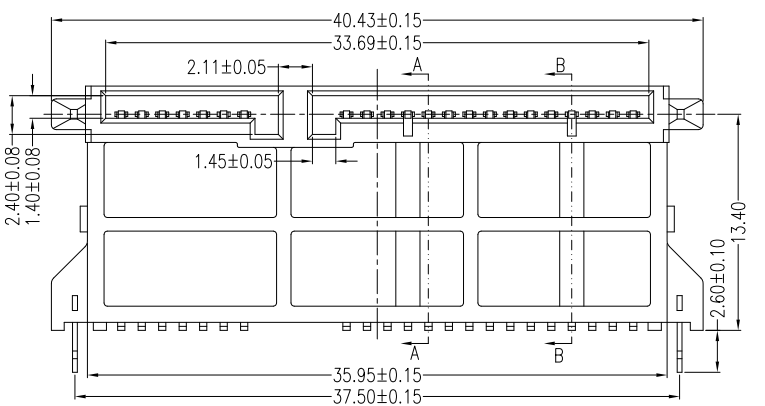
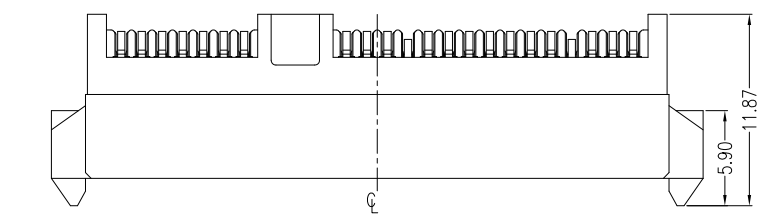
**\*Mechanical**  
 Insertion Force: 20N max.  
 Withdrawal Force: 4N min.  
 Durability: 500 cycles

**\*Electrical Specification**  
 Current Rating: 1.5 Ampere per contact  
 Contact Resistance: 30 mΩ max.  
 Insulation Resistance: 1000 MΩ min.  
 Dielectric Withstanding Voltage: 500 VAC

**\*Environmental**  
 Operating Temperature: -55°C to +85°C

**\*How to order:**  
 WATBG-22DL1PBU  
 U:Lead Free  
 B:Reverse SMT(Metal Post)(15.15)  
 P:Phosphor Bronze  
 1:Black  
 L:LCP  
 A:>0.8u",B:5u"D:15u",F:30u"  
 NO. of Contacts  
 Series No.

Signal Segment		Power Segment			
Name	Type	Name	Type	Name	Type
S1	GND	P1	V3.3	P9	V5
S2	A+	P2	V3.3	P10	GND
S3	A-	P3	V3.3	P11	DAS/DSS
S4	GND	P4	GND	P12	GND
S5	B-	P5	GND	P13	V12
S6	B+	P6	GND	P14	V12
S7	GND	P7	V5	P15	V12
		P8	V5		



REV Modification of nickel plating standard						WIN WIN PRECISION IND. CO., LTD.	
Units	mm	Scale	2:1	Drawing By	Date	TEL: 886-2-22994155	FAX: 886-2-22994157
Tolerance Unless Otherwise Specified				CXS	08/31-'18	Date	08/31-'18
.X	~	±0.35		Reviewed By	Date	Sheet	1 of 1
.XX	~	±0.25		LDF	09/03-'18	Title	SATA 7+15P Female Reverse SMT Type(Metal Post)(15.15)
.XXX	~	±0.15		Approval By	Date	Third Angle Projection	
Angle	~	± 3°		Nancy	09/10-'18	Drawing No.	WATBG-22PS-AN-N458
						REV	B