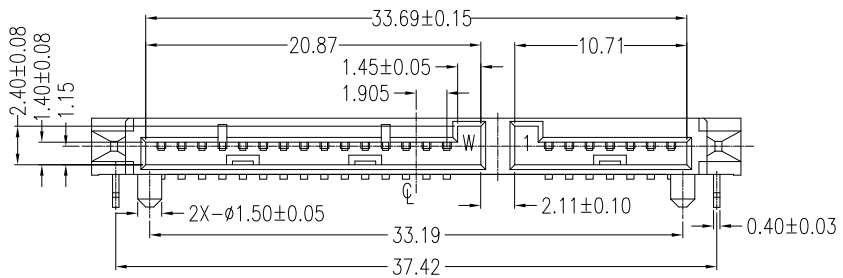


REV.	ECN.NO.	DATE
A	RELEASED	06/25-'08
E	Modify plating specifications	09/05-'19
F	Add 5: Reel specification Delete 3: Tray specification	05/17-'22



Signal Segment	
Name	Type
S1	GND
S2	A+
S3	A-
S4	GND
S5	B-
S6	B+
S7	GND

Power Segment	
Name	Type
P1	V3.3
P2	V3.3
P3	V3.3
P4	GND
P5	GND
P6	GND
P7	V5
P8	V5
P9	V5
P10	GND
P11	DAS/DSS
P12	GND
P13	V12
P14	V12
P15	V12

Notes:

*Material

Housing: LCP, UL 94V-0
 Contact: Phosphor Bronze
 Plating: Au Plating on contact area
 Sn (100u" Min) plating on solder Tail.
 Ni (50u" Min) contact underplating overall.
 Harpoon: Brass
 Plating: Sn (100u" Min) plating over Ni (50u" Min).

*Mechanical

Insertion Force: 45N max.
 Withdrawal Force: 10N min.
 Durability: 500 cycles

*Electrical Specification

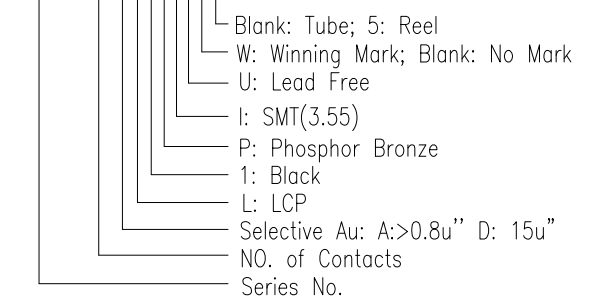
Current Rating: 1.5 Ampere per contact
 Contact Resistance: 30mΩ max.
 Insulation Resistance: 1000MΩ min.
 Dielectric Withstanding Voltage: 500 V AC

*Environmental

Operating Temperature: -55°C to +85°C

*How to order:

WATB-22DL1PIU 5

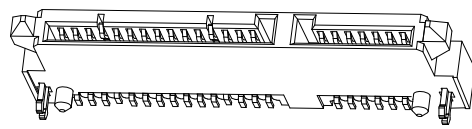
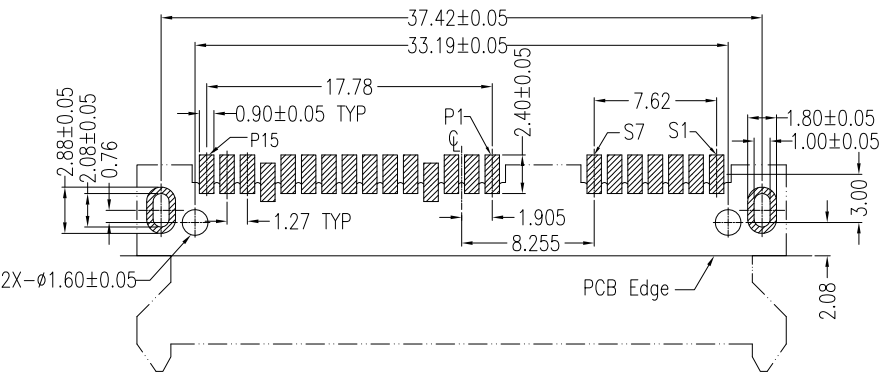
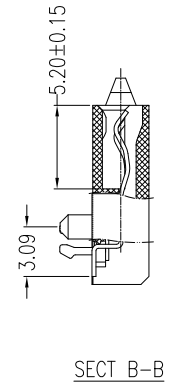
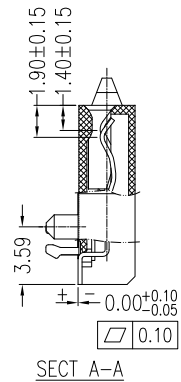
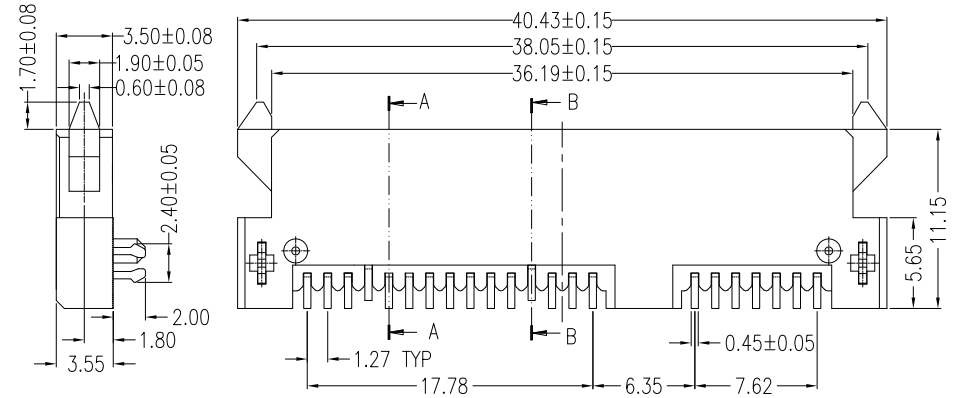


A

B

C

D



P.C.B LAYOUT (T=1.20mm)
 COMPONENT SIDE

REV Add 5: Reel specification;Delete 3: Tray specification.			
Units	mm	Scale	2:1
Tolerance Unless Otherwise Specified		Drawing By	Date
.X	~ ±0.35	ZZC	05/17-'22
.XX	~ ±0.25	Reviewed By	Date
.XXX	~ ±0.15	Charles	05/17-'22
Angle	~ ± 3°	Approval By	Date
		Nancy	05/25-'22

WIN WIN WIN WIN PRECISION IND. CO., LTD. D
 TEL: 886-2-22994155 FAX: 886-2-22994157

Date	05/17-'22	Title	Serial ATA 7+15P Female SMT Type (3.55)
Sheet	1 of 1		
Third Angle Projection		Drawing No.	WATB-22PS-AN-N228
REV	F		