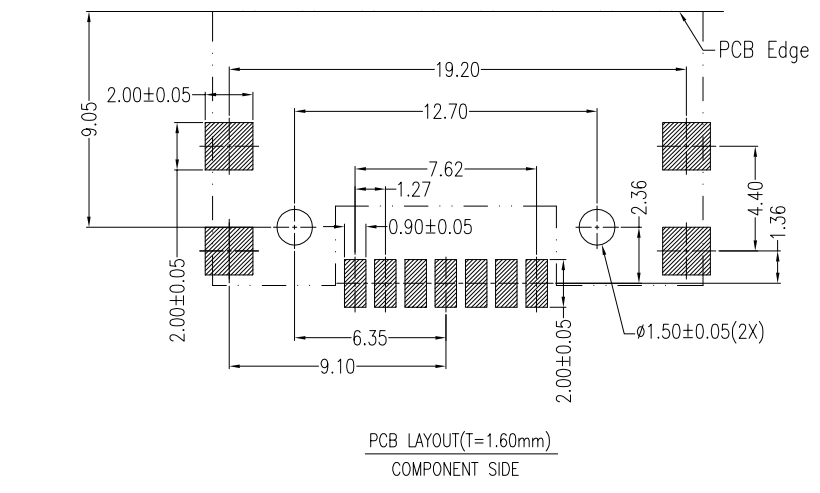
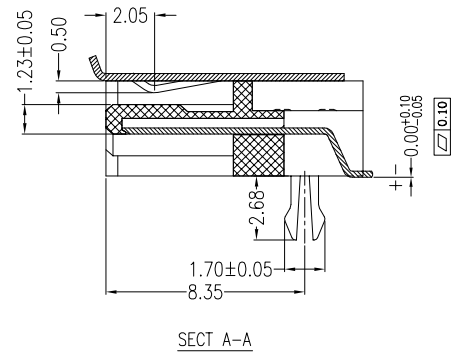
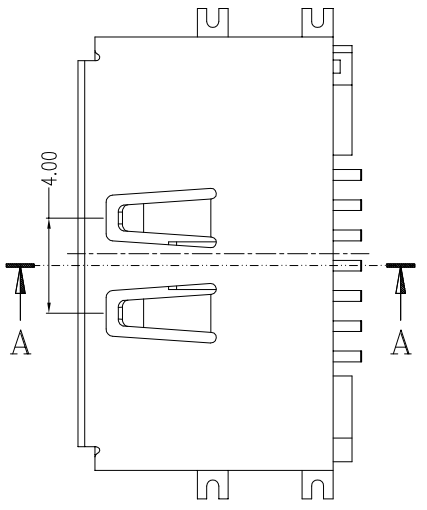
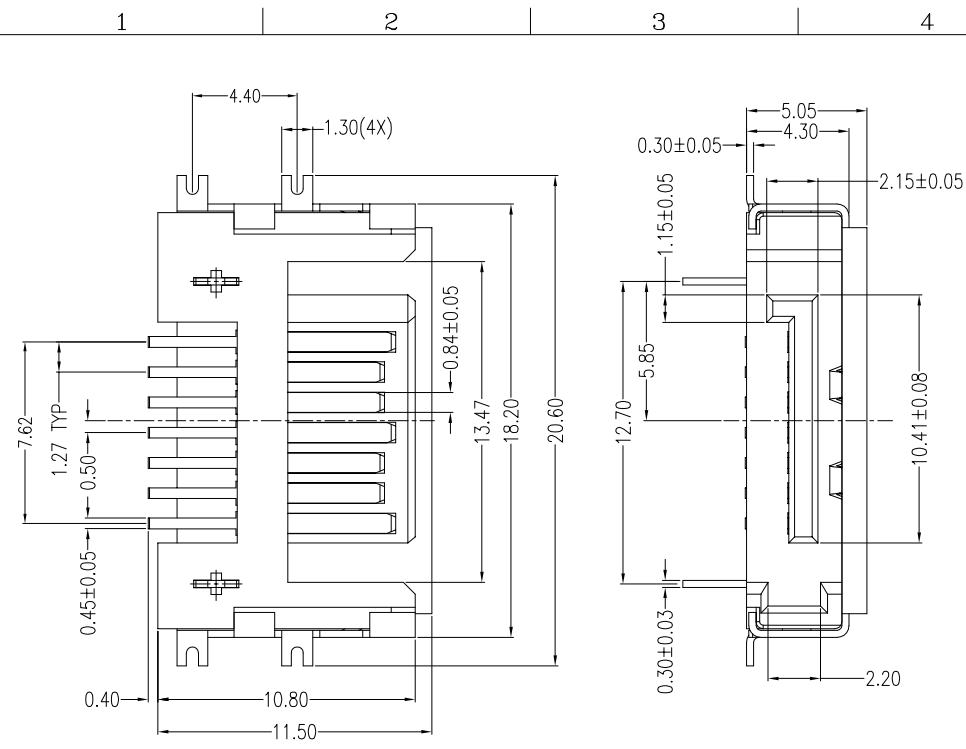


REV.	ECN.NO.	DATE
A	RELEASED	07/08-'03
E	Modify View and PCB LAYOUT	01/07-'15
F	Modify part no	04/16-'21



**NOTES:**

**\*Material**

Housing: LCP, UL 94V-0 Rated.  
 Contact: Phosphor Bronze  
 Plating: Au plating on contact area;  
 Sn(100u" Min.) plating on solder tail;  
 Ni(40u" Min.) underplating overall.  
 Harpoon: Brass  
 Plating: Sn(100u" Min.) plating over Ni(50u" Min.)  
 Shell: Brass; Ni(40u" Min.) Plating Overall.

**\*Mechanical**

Insertion Force: 45N Max.  
 Withdrawal Force: 10N Min.  
 Durability: 50 cycles

**\*Electrical Specification**

Current Rating: 1.5 Ampere per contact  
 Contact Resistance: 30mΩ Max.  
 Insulation Resistance: 1000MΩ Min.  
 Dielectric Withstanding Voltage: 500V AC

**\*Environmental**

Operating Temperature: -55°C to +85°C

**\*How to order:**

WATA-07DPLMS 5U

- U:Lead Free
- 5:Reel
- Blank:No Mark W:Winning Mark
- MS:Sandard (Metal shell SMT Type)
- L:LCP
- P:Phosphor Bronze
- Au: A:>0.8u"; D:15u"; F:30u"
- NO. of Contacts
- SATA for Card

REV	Modify part no.	Units	m.m	Scale	Drawing By	Date	WIN WIN PRECISION IND., CO., LTD.			
	WATA-07DPLMS4U → WATA-07DPLMS5U; 4: Tube → 5: Reel.				ZXC	04/16-'21	TEL: 886-2-22994155 FAX: 886-2-22994157			
Tolerance Unless Otherwise Specified					Reviewed By	Date	Date	04/16-'21	Title	SATA 7 Pin Sandard 90° (Metal Dhell SMT Type)
.X ~ ±0.35					Charles	04/19-'21	Sheet	1 of 1		
.XX ~ ±0.25					Approval By	Date	Third Angle Projection			
.XXX ~ ±0.15					Nancy	04/20-'21	Drawing No.			
Angle ~ ± 3°									WATA-007MN-AN-N046	REV F