

REV.	ECN.NO.	DATE
A	RELEASED	12/21/06
D	Modify Layout	08/15/11
E	Change Notes	08/23/12

Power Segment				
Pin NO.	Type	Name	Type	
P1	V33	P9	V5	
P2	V33	P10	Ground	
P3	V33	P11	Ready Led	
P4	Ground	P12	Ground	
P5	Ground	P13	V12	
P6	Ground	P14	V12	
P7	V5	P15	V12	
P8	V5			

Signal Segment				
Pin NO.	Type	Name	Type	
S1	Signal Ground	S8	Signal Ground	
S2	TP+	S9	IS+	
S3	TP-	S10	IS-	
S4	Signal Ground	S11	Signal Ground	
S5	RP-	S12	RS-	
S6	RP+	S13	RS+	
S7	Signal Ground	S14	Signal Ground	

NOTES:

***Material**

Housing: LCP+50%G.F, UL 94V-0 rated, Color: Black;
 Contact: Phosphor Bronze;
 Plating: Au plating on contact area, Sn(100u" Min.) plating on solder tail, Ni (40u" Min.) underplating overall
 Harpoon: Brass;
 Plating: Sn plating(100u" Min.) over Ni(50u" Min.).

***Mechanical**

Insertion Force: 50N Max.
 Withdrawal Force: 20N Min.
 Durability: 500 cycles

***Electrical Specification**

Current Rating: 1.5 Ampere per contact;
 Contact Resistance: 30 mΩ Max.
 Insulation Resistance: 1000 MΩ min.
 Dielectric Withstanding Voltage: 500 VAC.

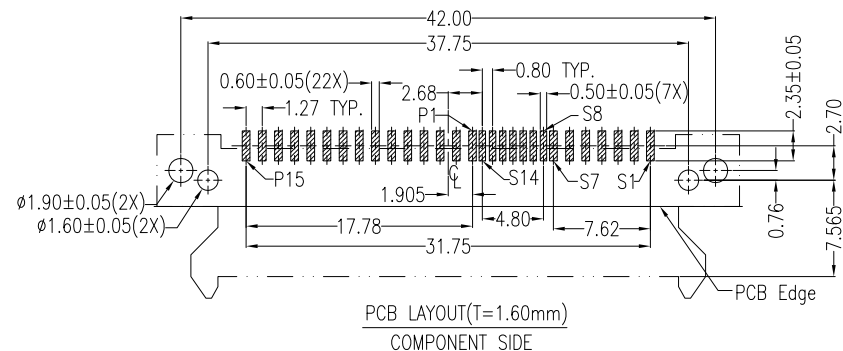
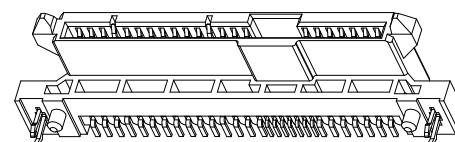
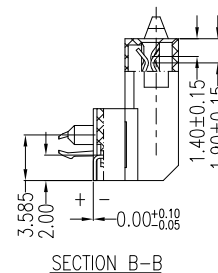
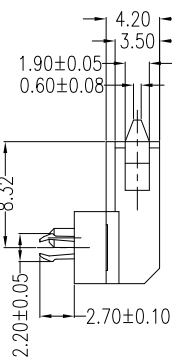
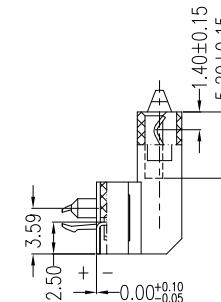
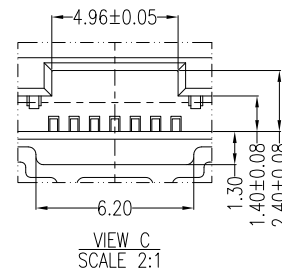
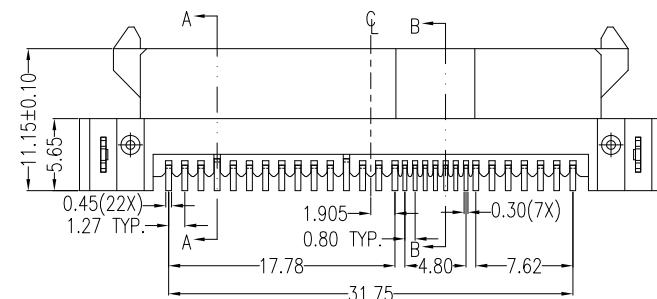
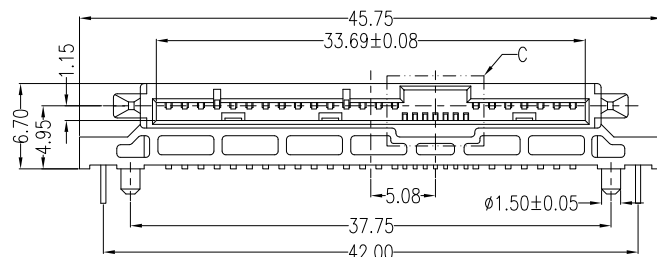
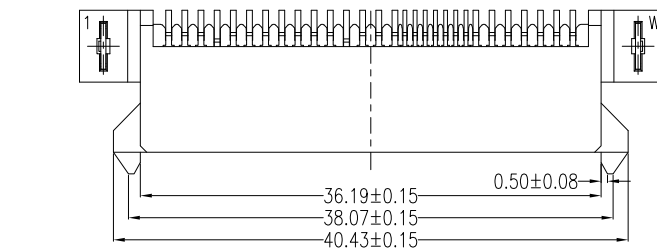
***Environmental**

Operating Temperature: 0°C to +55°C

***How to order**

WSAF-29F3L1PU 4

- 4:Tube
- W:Winning Mark Blank:No Mark
- U:Lead Free
- P:Phosphor Bronze
- 1:Black
- L:LCP
- 3:SMT(90°)(6.70)
- Au A:>0.8u" D:15u" F:30u"
- Number of Contacts
- Series No.



REV	Change Insertion/Withdrawal Force: 25N Max/5N Min → 50N Max/20N Min		Drawing By		Date
Units	mm	Scale	5:3	xiaowenyu	08/23/12
Tolerance Unless Otherwise Specified			Reviewed By		Date
.X	~	±0.38	huqi	08/23/12	
.XX	~	±0.25	Approval By		Date
.XXX	~	±0.20	Richard	08/23/12	
Angle	~	± 3°	Third Angle Projection		

WINNING WIN WIN PRECISION IND. CO., LTD.
 TEL: 886-2-22994155 FAX: 886-2-22994157

Date: 08/23/12
 Sheet: 1 of 1
 Title: SAS 29P R/A SMT Female(6.70)

Drawing No. WSAF-029PS-AN-N345 REV E