

| REV. | ECN.NO. | DATE |
|------|---|----------|
| A | RELEASED | 04/03/07 |
| B | Modify the Spec | 04/17/07 |
| C | Add Tolerance Modify Notes Add Pin Definition | 09/08/10 |

| Power Segment | | | | | Signal Segment | | | | | |
|---------------|--------|------|-----------|--|----------------|--------|--------|------|--------|--------|
| Pin NO. | Type | Name | Type | | Pin NO. | Type | Name | Type | | |
| P1 | V33 | P9 | V5 | | S1 | Signal | Ground | S8 | Signal | Ground |
| P2 | V33 | P10 | Ground | | S2 | TP+ | | S9 | TS+ | |
| P3 | V33 | P11 | Ready Led | | S3 | TP- | | S10 | TS- | |
| P4 | Ground | P12 | Ground | | S4 | Signal | Ground | S11 | Signal | Ground |
| P5 | Ground | P13 | V12 | | S5 | RP- | | S12 | RS- | |
| P6 | Ground | P14 | V12 | | S6 | RP+ | | S13 | RS+ | |
| P7 | V5 | P15 | V12 | | S7 | Signal | Ground | S14 | Signal | Ground |
| P8 | V5 | | | | | | | | | |

NOTES:

***Material**

Housing: LCP+50%G.F, UL 94V-0 rated, Color: Black;
 Contact: Phosphor Bronze;
 Plating: Gold plating on contact area, Tin(100u" min.) plating on solder tail, Nickel (40u" min.) underplating overall
 Harpoon: Brass;
 Plating: Tin plating(100u" min.) over Nickel(40u" min.).

***Mechanical**

Insertion Force: 25N max.
 Withdrawal Force: 5N min.
 Durability: 500 cycles

***Electrical Specification**

Current Rating: 1.5 Ampere per contact;
 Contact Resistance: 30 mΩ max.
 Insulation Resistance: 1000 MΩ min.
 Dielectric Withstanding Voltage: 500 VAC.

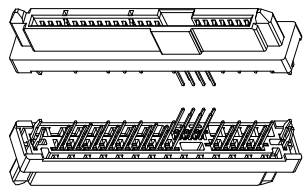
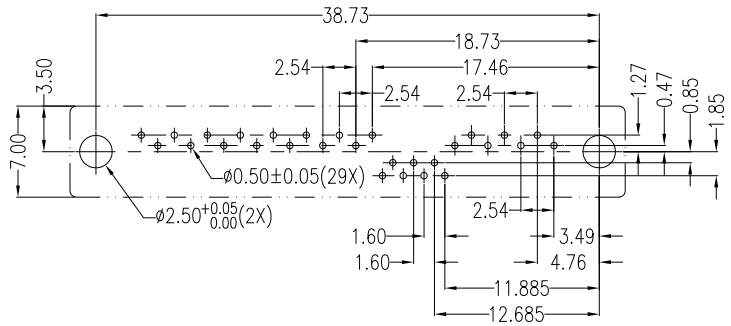
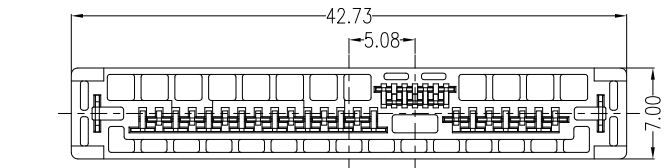
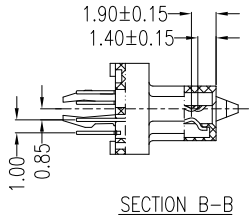
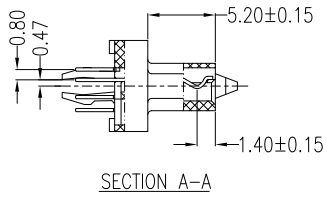
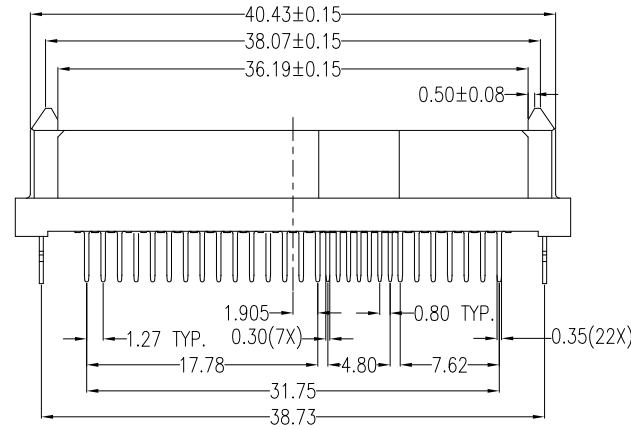
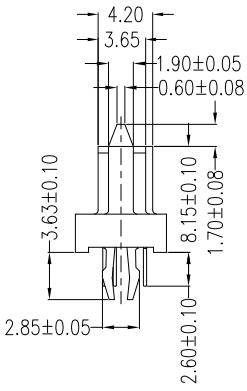
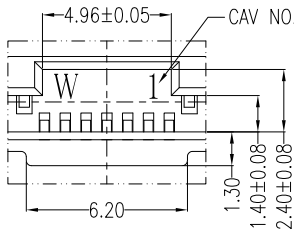
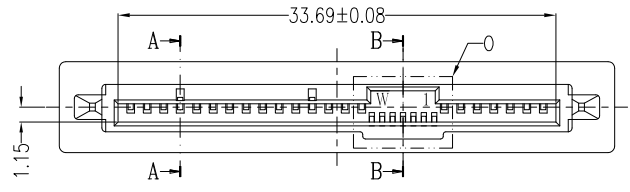
***Environmental**

Operating Temperature: 0°C to +55°C

***How to order**

WSAF-29F2L1PU 4

- 4:Tube
- W:Winning Mark Blank:No Mark
- U:Lead Free
- P:Phosphor Bronze
- 1:Black
- L:LCP
- 2:DIP(2.6)
- Gold A:Flash D:15u" F:30u"
- Number of Contacts
- Series No.



REV 1. Add Tolerance 2. Modify Notes 3. Add Pin Definition

| Units | mm | Scale | 5:3 | Drawing By | Date |
|-------|----|-------|-----|-------------|----------|
| | | | | Lulu | 09/09/10 |
| | | | | Reviewed By | Date |
| | | | | Rosh | 09/09/10 |
| | | | | Approval By | Date |
| | | | | Roger | 09/09/10 |

WIN WIN PRECISION IND. CO., LTD
 TEL: 886-2-2299455 FAX: 886-2-22994157

| Date | 09/08/10 | Title | SAS 29P Lengthen Double Row DIP Female (2.6) |
|------------------------|-------------------|-------|--|
| Sheet | 1 of 1 | | |
| Third Angle Projection | | | |
| Drawing No. | WSAF-29PS-AN-W189 | REV | C |