

1

2

3

4

5

6

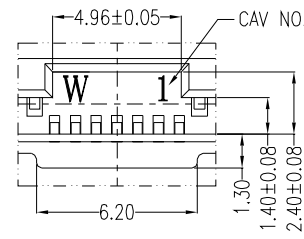
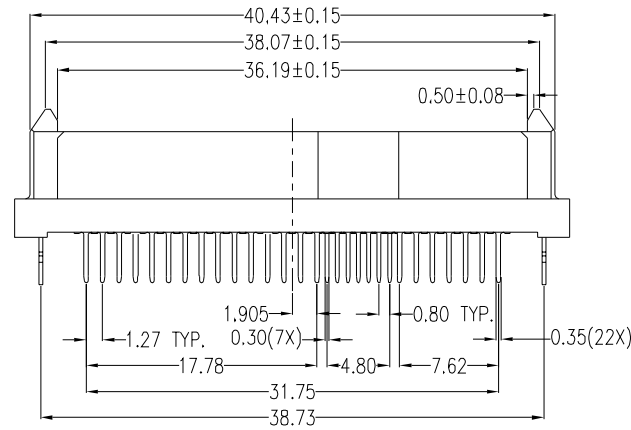
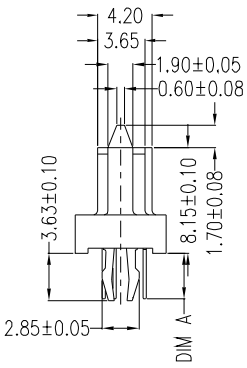
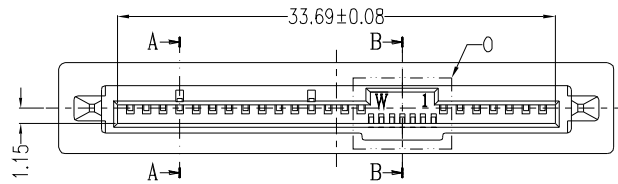
7

8

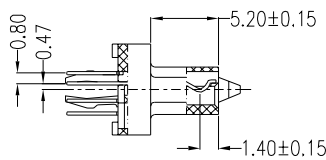
| REV. | ECN.NO. | DATE |
|------|---------------------------|-----------|
| A | RELEASED | 12/01-'06 |
| E | Modify View | 03/16-'15 |
| F | Modify "DIM A" Definition | 07/15-'15 |

| Power Segment | | | | |
|---------------|--------|------|-----------|--|
| Pin NO. | Type | Name | Type | |
| P1 | V3.3 | P9 | V5 | |
| P2 | V3.3 | P10 | Ground | |
| P3 | V3.3 | P11 | Ready Led | |
| P4 | Ground | P12 | Ground | |
| P5 | Ground | P13 | V12 | |
| P6 | Ground | P14 | V12 | |
| P7 | V5 | P15 | V12 | |
| P8 | V5 | | | |

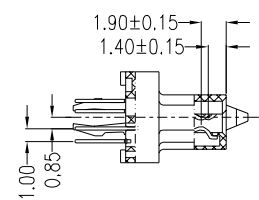
| Signal Segment | | | | |
|----------------|---------------|------|---------------|--|
| Pin NO. | Type | Name | Type | |
| S1 | Signal Ground | S8 | Signal Ground | |
| S2 | TP+ | S9 | TS+ | |
| S3 | TP- | S10 | TS- | |
| S4 | Signal Ground | S11 | Signal Ground | |
| S5 | RP- | S12 | RS- | |
| S6 | RP+ | S13 | RS+ | |
| S7 | Signal Ground | S14 | Signal Ground | |



VIEW 0
SCALE 2:1

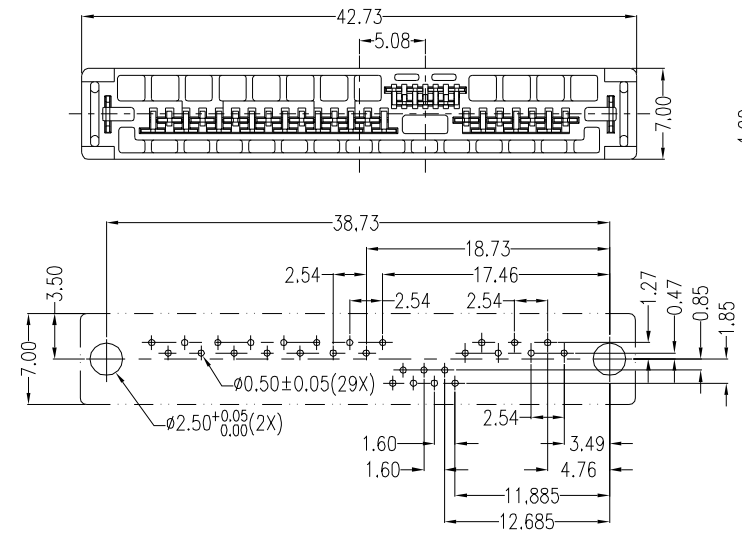


SECTION A-A

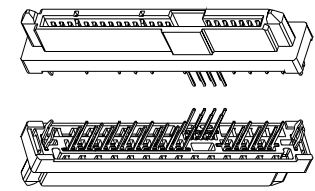


SECTION B-B

| PART NO | DIM A | PCB |
|-----------------|-------|------|
| WSAF-29*1L*PU*4 | 3.50 | 2.36 |
| WSAF-29*2L*PU*4 | 2.60 | 1.57 |



PCB LAYOUT
COMPONENT SIDE



NOTES:

*Material

Housing: LCP, UL 94V-0 rated, Color: Black;
 Contact: Phosphor Bronze;
 Plating: Au plating on contact area;
 Sn(100u" Min.) plating on solder tail;
 Ni(40u" Min.) underplating overall.
 Harpoon: Brass;
 Plating: Sn(100u" Min.) plating on solder tail;
 Ni(50u" Min.) underplating overall.

*Mechanical

Insertion Force: 25N max.
 Withdrawal Force: 5N min.
 Durability: 500 cycles

*Electrical Specification

Current Rating: 1.5 Ampere per contact;
 Contact Resistance: 30 mΩ max.
 Insulation Resistance: 1000 MΩ min.
 Dielectric Withstanding Voltage: 500 VAC.

*Environmental

Operating Temperature: 0°C to +55°C

*How to order

- WSAF-29F1L1PU 4
- 4:Tube
 - W:Winning Mark Blank:No Mark
 - U:Lead Free
 - P:Phosphor Bronze
 - 1:Black
 - L:LCP
 - 1:DIP(3.5) 2:DIP(2.6)
 - Au A:>0.8u" D:15u" F:30u"
 - Number of Contacts
 - Series No.

| REV | Modify "DIM A" Definition | | | Drawing By | Date |
|--------------------------------------|---------------------------|-------|-------------|-------------|-----------|
| Units | mm | Scale | 5:3 | LDF | 07/16-'15 |
| Tolerance Unless Otherwise Specified | | | | Reviewed By | Date |
| .X | ~ | ±0.35 | Blue | 07/16-'15 | |
| .XX | ~ | ±0.25 | Approval By | Date | |
| .XXX | ~ | ±0.15 | Roger | 07/22-'15 | |
| Angle | ~ | ± 3° | | | |

WIN WIN PRECISION IND. CO., LTD
 TEL: 886-2-22994155 FAX: 886-2-22994157

Date: 07/15-'15
 Sheet: 1 of 1
 Title: SAS 29P Lengthen Double Row DIP Female
 Third Angle Projection

Drawing No. WSAF-29PS-AN-W175 REV F

1

2

3

4

5

6

7

8