

REV.	ECN.NO.	DATE
A	RELEASED	05/10-'19
C	Modify of "F" Dimension Position	07/12-'19
D	Delete "F" Dimension	04/23-'24

NOTES:

***Material**

Body: Nylon9T, UL 94V-0.
 Contacts: Brass.
 Plating: Au plating on contact area.
 Sn(100u" Min.) plating on solder tail.
 Ni(50u" Min.) underplating overall.

***Mechanical:**

Insertion Force: 1.15N max per contact pair.
 Withdrawal Force: 0.15N min per contact pair.
 Contact Retention Force: 3.43N min per contact.
 Durability: 50 cycles

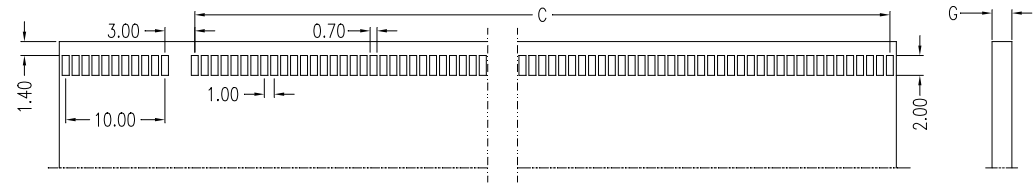
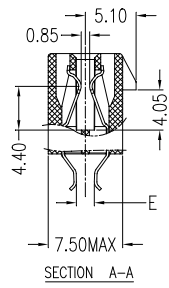
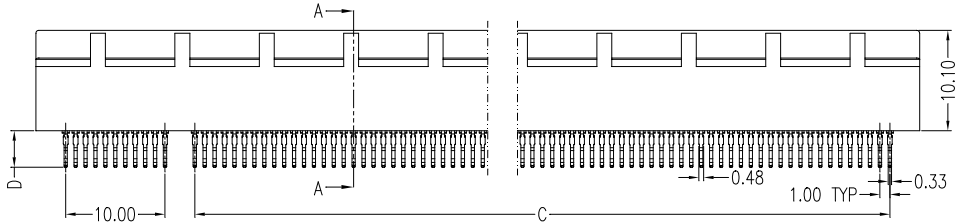
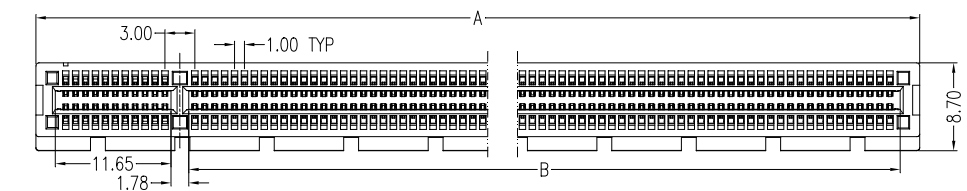
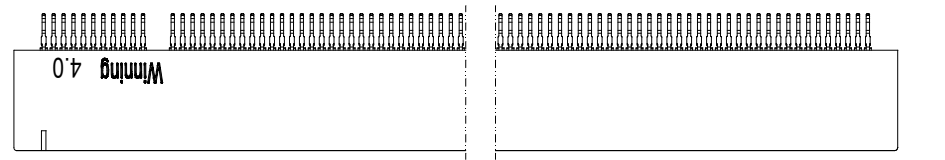
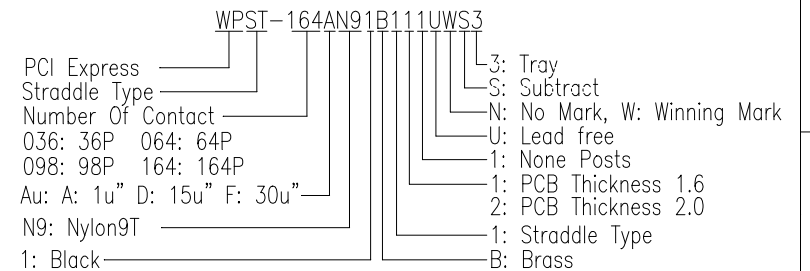
***Electrical Specification**

Current Rating: 1.1 Ampere.
 Contact Resistance: 30 mΩ Max.
 Insulation Resistance: 1000 MΩ Min.
 Dielectric Withstanding Voltage: 500 VAC.

***Environmental**

Operating Temperature: -55°C to +105°C

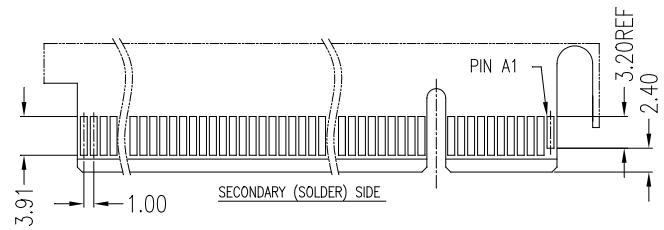
***How to order:**



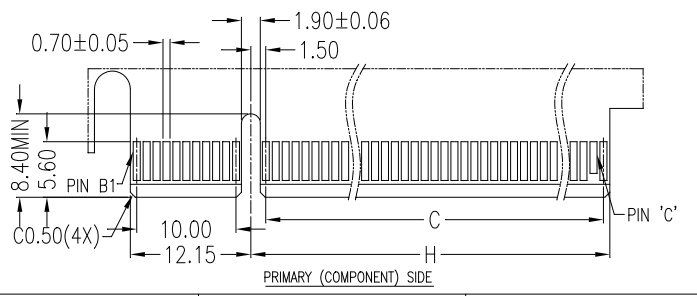
P.C.B. Layout For Straddle

#POS REF	DIM 'A'	DIM 'B'	DIM 'C'	DIM 'H'	PIN 'C'
36P	25.00	7.65	6.00	8.15	B17
64P	39.00	21.65	20.00	22.15	B31
98P	56.00	38.65	37.00	39.15	B48
164P	89.00	71.65	70.00	72.15	B81

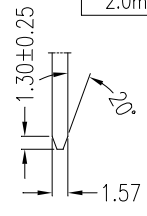
PCB Thickness	DIM 'D'	DIM 'E'	DIM 'G'
1.6mm	3.51	1.40	1.60
2.0mm	3.68	1.80	2.00



SECONDARY (SOLDER) SIDE



PRIMARY (COMPONENT) SIDE



REV Delete "F" Dimension		Drawing By		Date		WINNING® WIN WIN PRECISION IND. CO., LTD.	
Units	mm	Scale	1.5: 1	LZX	04/23-'24	TEL: 886-2-22994155	FAX: 886-2-22994157
Tolerance Unless Otherwise Specified				Reviewed By	Date	Date	04/23-'24
.X ~ ±0.35				Charles	04/23-'24	Sheet	1 of 1
.XX ~ ±0.25				Approval By	Date	Title	
.XXX ~ ±0.15				Nancy	04/25-'24	PCI Express 4.0 Straddle Type (None Post)	
Angle ~ ± 3°				Third Angle Projection		Drawing No. WPST-164PS-AN-W224	
						REV	D