

REV.	ECN.NO.	DATE
A	RELEASED	06/07-'18
L	According to Spec Modify Dimension	03/04-'22
M	Modify Housing Structure	05/15-'23

NOTES:

***Material**

Body: LCP/Nylon9T, UL 94V-0.
 Contacts: Phosphor Bronze.
 Plating : Au Plating on Contact Area.
 Sn (100u" Min.) plating on solder tail.
 Ni (50u" Min.) underplating overall.
 Harpoon: Brass
 Plating: Ni (50u" Min.)

***Mechanical:**

Insertion Force: 1.15N max per contact pair.
 Withdrawal Force: 0.15N min per contact pair.
 Contact Retention Force: 3.43N min per contact.
 Durability: 50 cycles.

***Electrical Specification**

Current Rating : 1.1 Ampere.
 Contact Resistance : 30 mΩ Max.
 Insulation Resistance : 1000 MΩ Min.
 Dielectric Withstanding Voltage: 500 VAC.

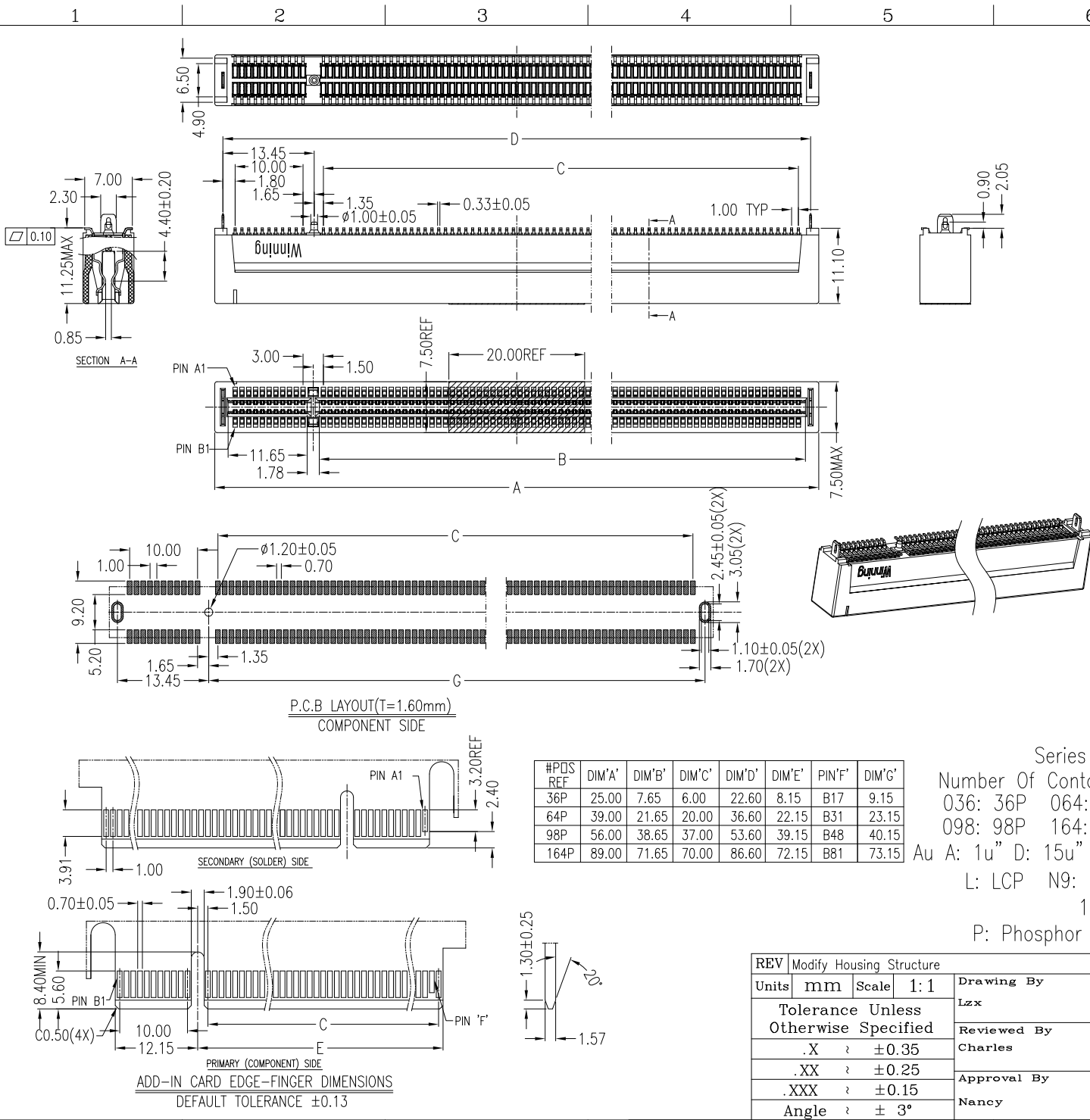
***Environmental**

Operating Temperature: -55°C To +105°C.

***How to order:**

WPEM-XXXAL1P15HW7

Series NO. 7: Tray+Mylar 5: Reel+Mylar
 Number Of Contact W: Winning Mark
 036: 36P 064: 64P N: No Mark
 098: 98P 164: 164P H: Halogen Free+RoHS-
 L: LCP N9: Nylon9T Compliance
 1: Black U: Lead Free
 P: Phosphor Bronze 5: Straight Metal Posts
 1: SMT Type



P.C.B LAYOUT(T=1.60mm)
COMPONENT SIDE

SECONDARY (SOLDER) SIDE

PRIMARY (COMPONENT) SIDE

ADD-IN CARD EDGE-FINGER DIMENSIONS
DEFAULT TOLERANCE ±0.13

#POS REF	DIM'A'	DIM'B'	DIM'C'	DIM'D'	DIM'E'	PIN'F'	DIM'G'
36P	25.00	7.65	6.00	22.60	8.15	B17	9.15
64P	39.00	21.65	20.00	36.60	22.15	B31	23.15
98P	56.00	38.65	37.00	53.60	39.15	B48	40.15
164P	89.00	71.65	70.00	86.60	72.15	B81	73.15

REV	Modify Housing Structure	Drawing By	Date	WIN WIN PRECISION IND. CO., LTD.	
Units	mm	Scale	1:1	TEL: 886-2-22994155 FAX: 886-2-22994157	
Tolerance Unless Otherwise Specified		Reviewed By	Date	Date	Title
.X	± 0.35	Charles	05/18-'23	05/15-'23	
.XX	± 0.25	Approval By	Date	Sheet	PCI Express 4.0 SMT Type (Straight Metal Posts)
.XXX	± 0.15	Nancy	05/24-'23	1 of 1	
Angle	± 3°	Third Angle Projection		Drawing No.	WPEM-XXXPS-AN-W213
				REV	M