

REV.	ECN.NO.	DATE
A	RELEASED	08/15-'19
E	According to Spec Modify Dimension	03/04-'22
F	Modify Housing Structure	05/15-'23

**NOTES:**

**\*Material**

Body: LCP, UL 94V-0.  
 Contacts: Phosphor Bronze.  
 Plating : Au Plating on Contact Area.  
 Sn (100u" Min.) plating on solder tail.  
 Ni (50u" Min.) underplating overall.

**\*Mechanical:**

Insertion Force: 1.15N max per contact pair.  
 Withdrawal Force: 0.15N min per contact pair.  
 Contact Retention Force: 3.43N min per contact.  
 Durability: 50 cycles.

**\*Electrical Specification**

Current Rating : 1.1 Ampere.  
 Contact Resistance : 30 mΩ Max.  
 Insulation Resistance : 1000 MΩ Min.  
 Dielectric Withstanding Voltage: 500 VAC.

**\*Environmental**

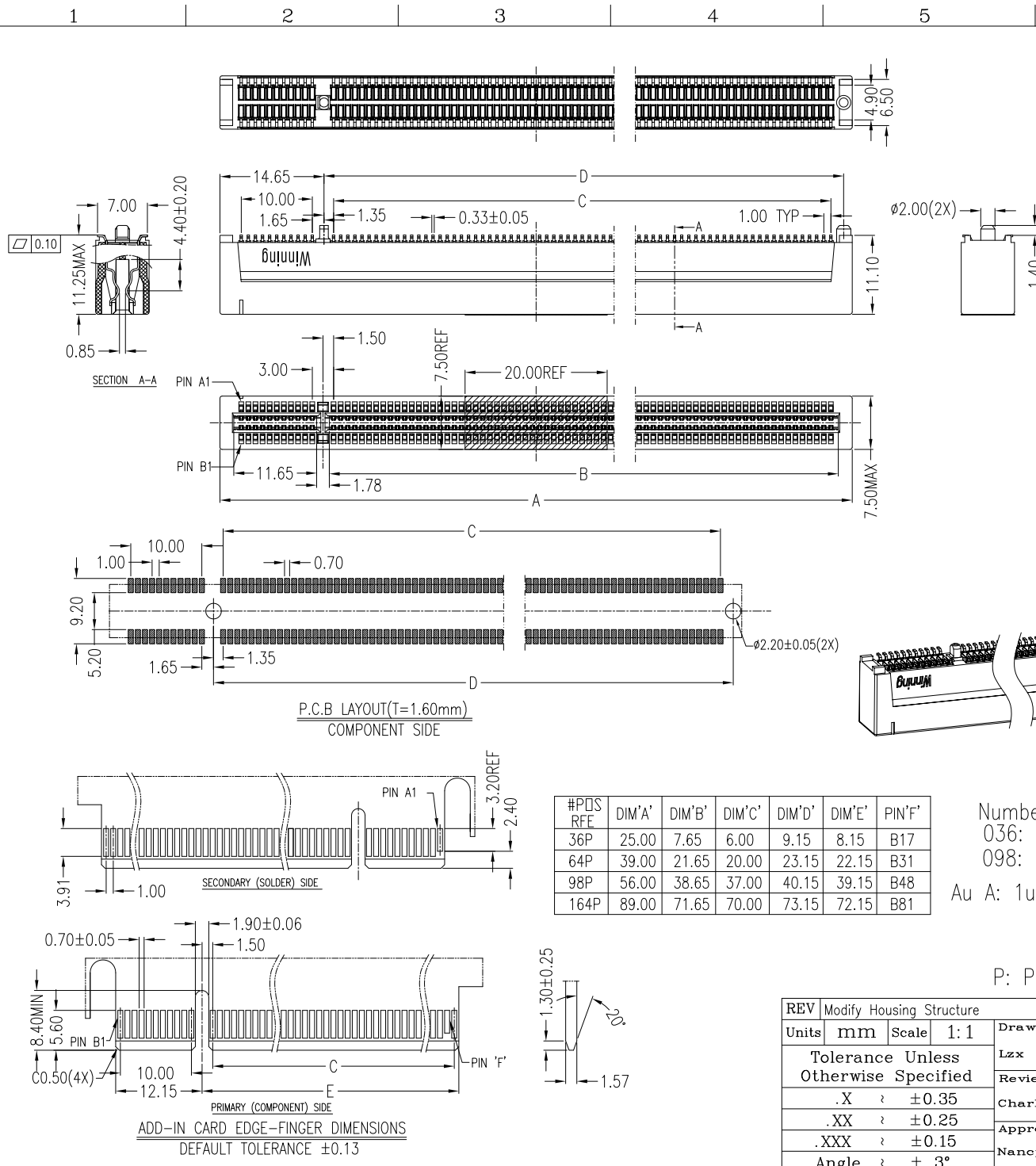
Operating Temperature: -55°C To +105°C.

**\*How to order:**

WPEM-XXXAL1P12HW7

Series NO. \_\_\_\_\_  
 Number Of Contact \_\_\_\_\_  
 036: 36P 064: 64P  
 098: 98P 164: 164P  
 Au A: 1u" D: 15u" F: 30u"  
 L: LCP  
 1: Black  
 P: Phosphor Bronze

7: Tray+Mylar 5: Reel+Mylar  
 W: Winning Mark  
 N: No Mark  
 H: Halogen Free+RoHS-  
 Compliance  
 2: Plastic Posts  
 1: SMT Type



#POS REF	DIM'A'	DIM'B'	DIM'C'	DIM'D'	DIM'E'	PIN'F'
36P	25.00	7.65	6.00	9.15	8.15	B17
64P	39.00	21.65	20.00	23.15	22.15	B31
98P	56.00	38.65	37.00	40.15	39.15	B48
164P	89.00	71.65	70.00	73.15	72.15	B81

REV	Modify Housing Structure	Drawing By	Date	WIN WIN PRECISION IND. CO., LTD.	
Units	mm	Scale	1:1	TEL: 886-2-22994155 FAX: 886-2-22994157	
Tolerance Unless Otherwise Specified		Lzx	05/18-'23	Date	05/15-'23
.X	± 0.35	Reviewed By	Charles	Date	05/18-'23
.XX	± 0.25	Approval By	Nancy	Date	05/24-'23
.XXX	± 0.15	Third Angle Projection		Sheet	1 of 1
Angle	± 3°	Drawing No.		Title	
		WPEM-XXXPS-AN-W225		PCI Express 4.0 SMT Type (Plastic Posts)	
		REV		F'	