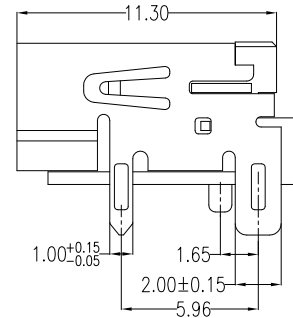
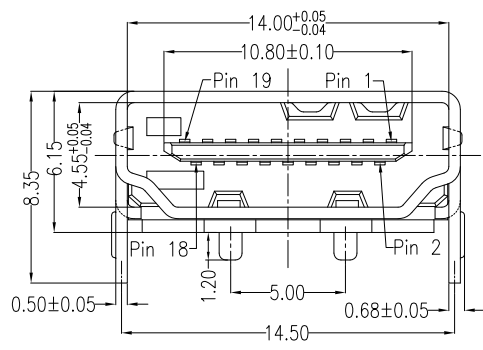


REV.	ECN.NO.	DATE
A	RELEASED	04/01-'09
H	Modify Dimensions	08/31-'18
I	Modify Contace Plating	03/19-'21



No.	Signal Name	No.	Signal Name
1	TMDS Data2+	11	TMDS Clock Shield
2	TMDS Data2 Shield	12	TMDS Clock-
3	TMDS Data2-	13	CEC
4	TMDS Data1+	14	Reserved (in cable but N.C. on device)
5	TMDS Data1 Shield	15	SCL
6	TMDS Data1-	16	SDA
7	TMDS Data0+	17	DDC/CEC Ground
8	TMDS Data0 Shield	18	+5V Power
9	TMDS Data0-	19	Hot Plug Detect
10	TMDS Clock+		

NOTES:

***Material**

Housing: LCP, UL 94V-0 Rated; Color: Black.
 Shell: Brass.
 Plating: Ni(40u" Min.) Plating .
 Contact: Brass.
 Plating: Au plating on contact area;
 Sn(100u" Min.) plating on solder tail;
 Ni(50u" Min.) underplating overall.

***Electrical Specification**

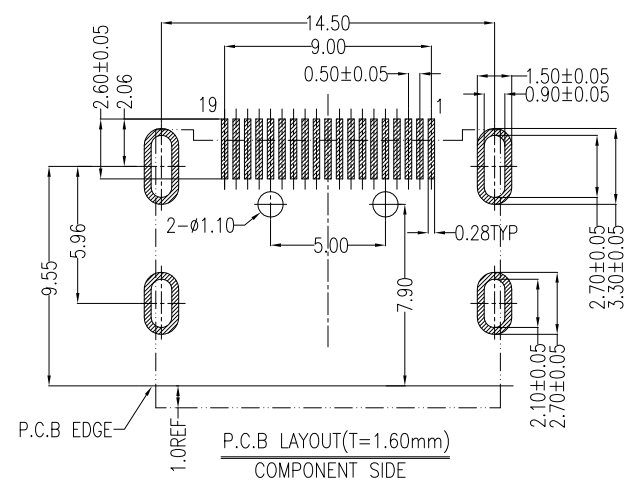
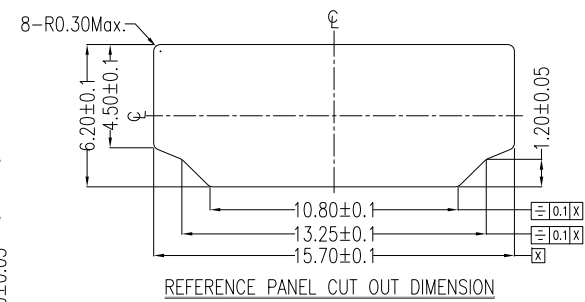
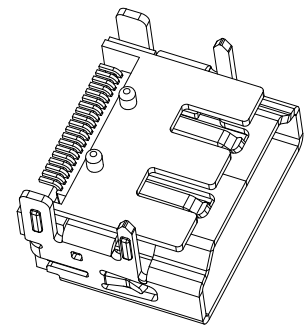
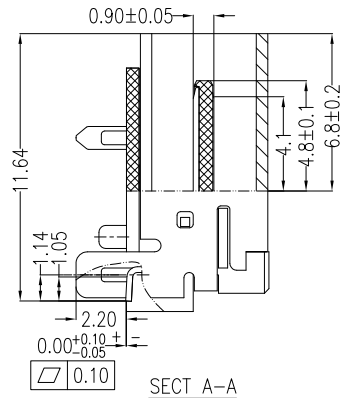
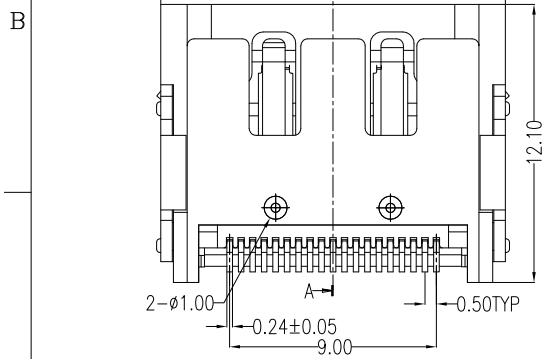
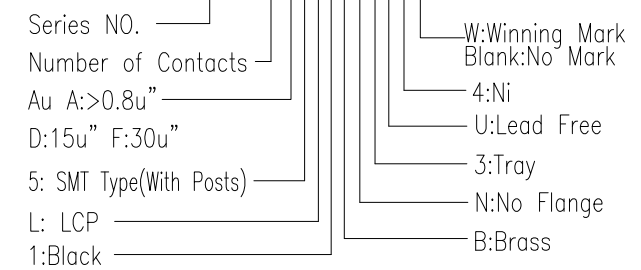
Operation Voltage: 40 VAC max.
 Current Rating: 0.5 Ampere per contact
 Contact Resistance: 10 mΩ max.
 Insulation Resistance: 100 MΩ min.
 Dielectric Withstanding Voltage: 500 VAC

***Environmental**

Operating Temperature: -55°C to +85°C

***How To Order**

WHDM-19D5L1BN3U4



REV Modify Contace Plating :Ni (40u"Min)→ Ni (50u" Min)				WINNING WIN WIN PRECISION IND. CO., LTD.					
Units	mm	Scale	3:1	Drawing By	WVY	Date	03/19-'21	TEL: 886-2-22994155	FAX: 886-2-22994157
Tolerance Unless Otherwise Specified				Reviewed By	Charles	Date	03/22-'21	Date	03/19-'21
.X ~ ±0.35				Approval By	Nancy	Date	03/23-'21	Sheet	1 of 1
.XX ~ ±0.25				Third Angle Projection		Title		High Definition Media Interface 19PIN(Shield)SMT Type(With Posts) (No Flange)	
.XXX ~ ±0.15				Drawing No.		WHDM-19PS-AN-NO40		REV	I
Angle ~ ± 3°									