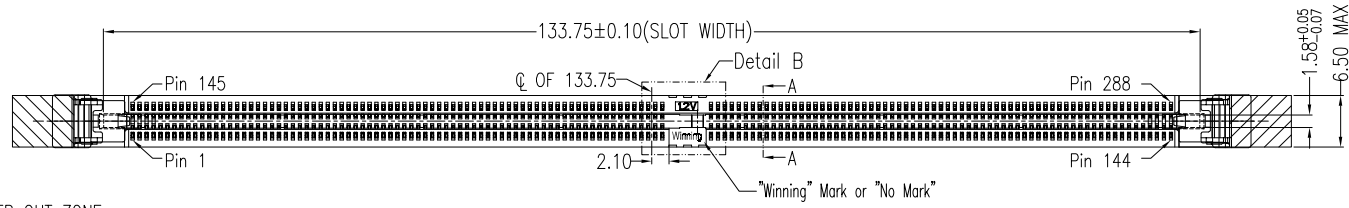
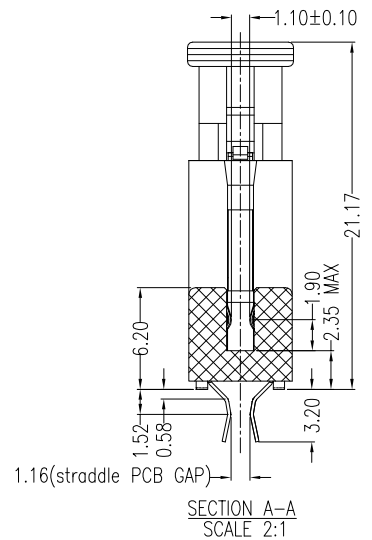
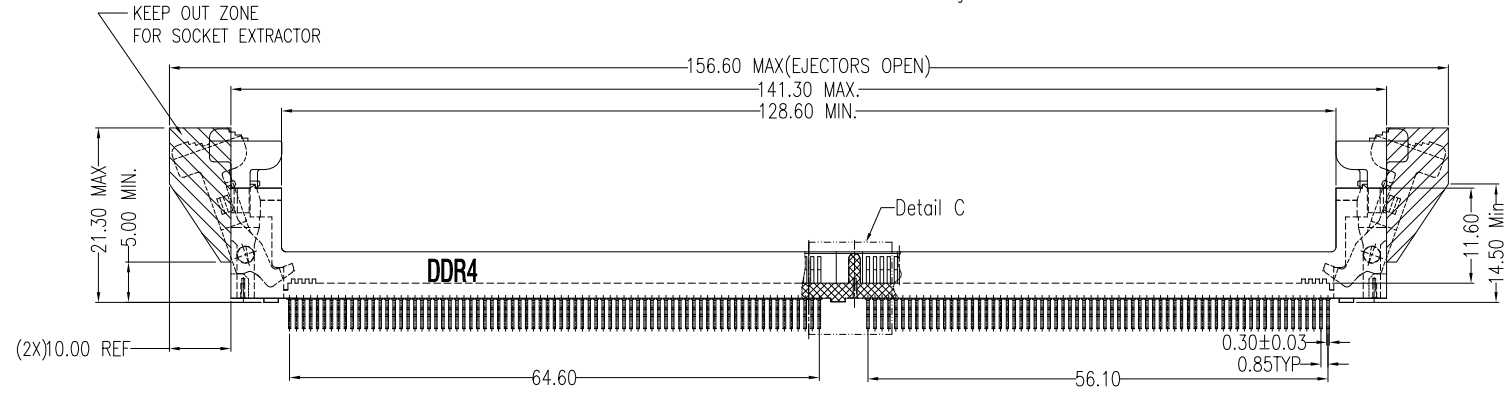


REV.	ECN.NO.	DATE
A	RELEASED	05/12-'14
F	Modify Body&Ejector struture	06/24-'20
G	Modify dimensions: 3.07 — 3.20	07/03-'20

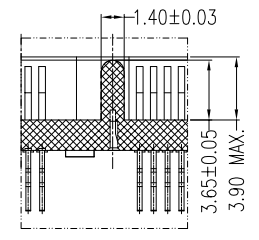
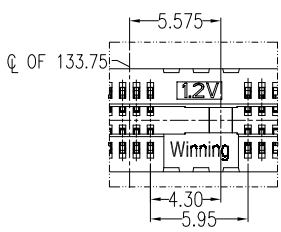
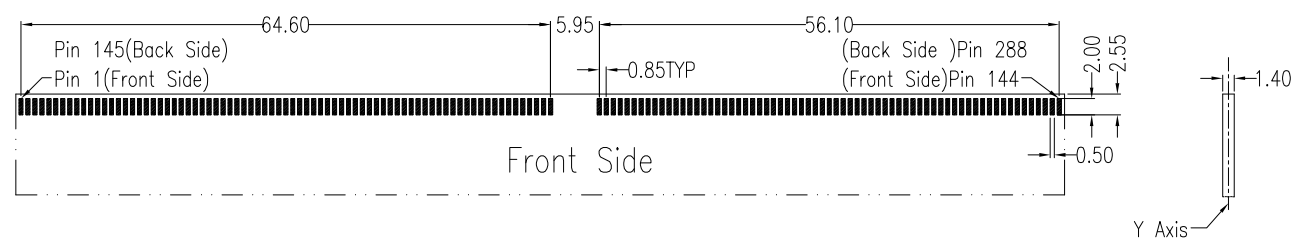
A



B



C

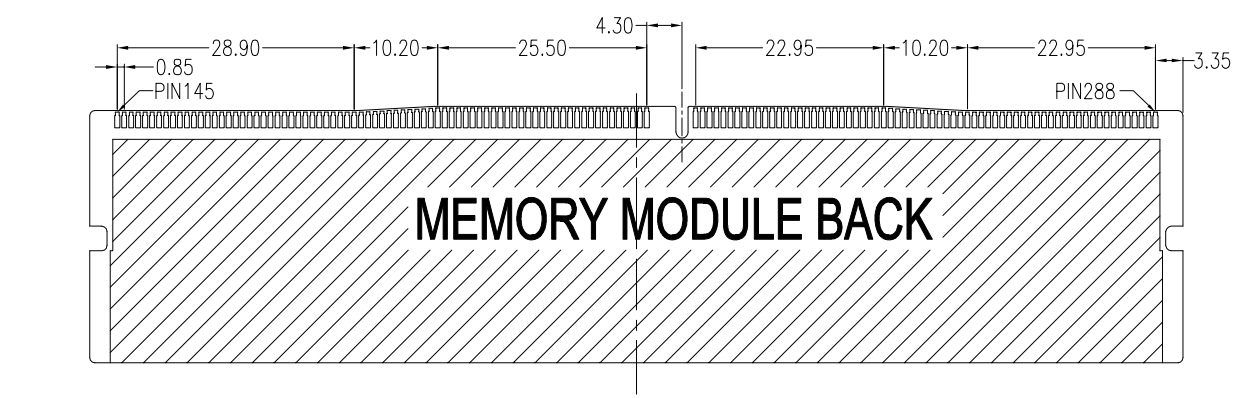
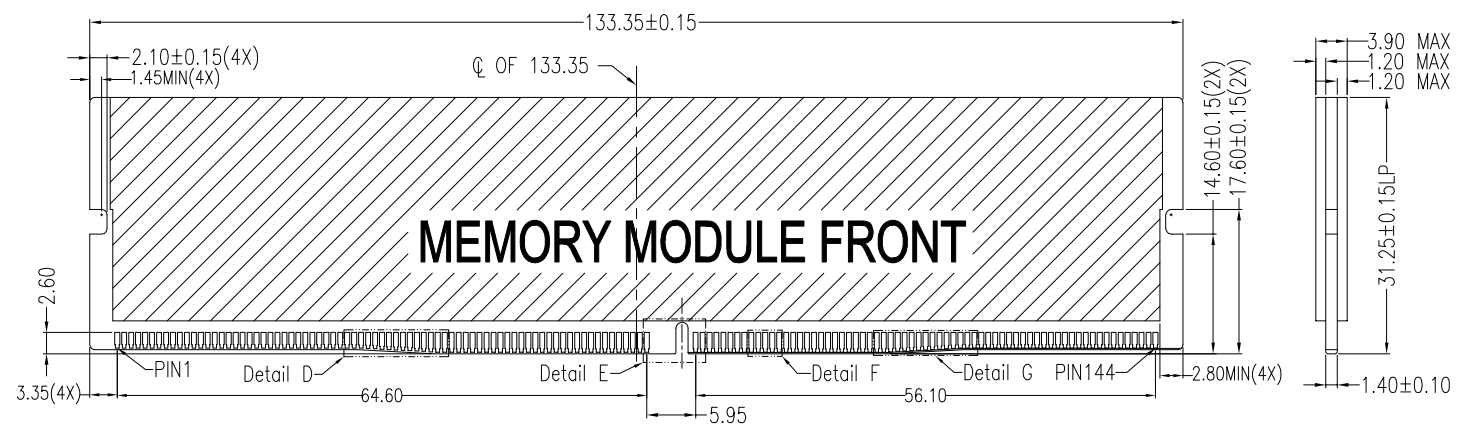


Recommended PCB Layout Thickness=1.40mm Tolerance:±0.05  
Both Front and Back Side PADS are Mirror Relation Related to Y Axis

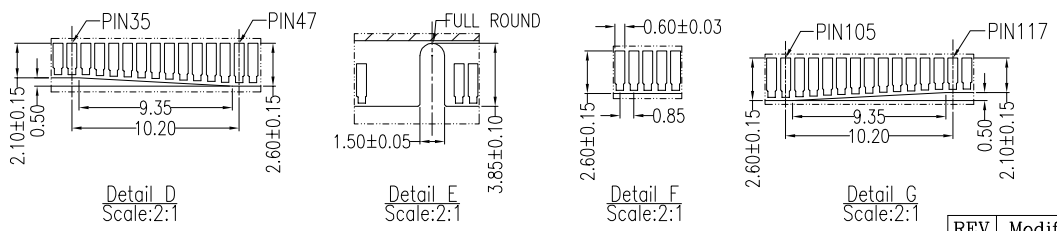
D

REV	Modify dimensions: 3.07 — 3.20			Drawing By	Date	WIN WIN PRECISION IND. CO., LTD.		
Units	mm	Scale	1:1	LZX	07/03-'20	TEL: 886-2-22994155 FAX: 886-2-22994157		
Tolerance Unless Otherwise Specified				Reviewed By	Date	Date	07/03-'20	Title
.X	~	±0.35		LDF	07/03-'20	Sheet	1 of 2	
.XX	~	±0.25		Approval By	Date	Third Angle Projection		
.XXX	~	±0.15		Nancy	07/07-'20	Drawing No. WDD4S-288PS-AN-W114		
Angle	~	± 3°				REV	G	

REV.	ECN.NO.	DATE
A	RELEASED	05/12-'14
F	Modify Body&Ejector struture	06/24-'20
G	Modify dimensions: 3.07 — 3.20	07/03-'20



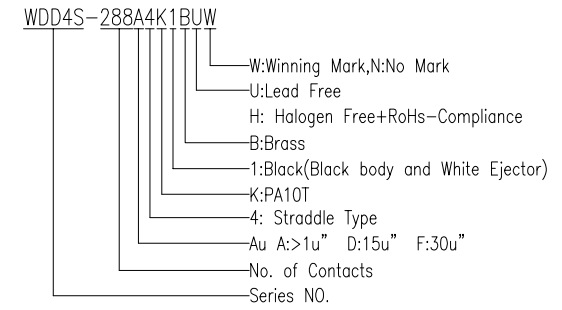
Recommended Memory Module Layout



**NOTES**

- \*MATERIAL:**  
 Body: PA10T, UL 94V-0 rated,color:selective;  
 Ejector: Nylon66,UL 94V-0 rated,color:selective;  
 Contact: Copper alloy;  
 Plating: Au Plating on contact area  
 Sn(100u"Min) plating on solder Tail  
 Ni(50u"Min) contact underplating overall.
- \*MECHANICAL:**  
 Contact Retention Force: 300 Grams Min. Per Pin;  
 Insertion Force: 10.88Kgf Max. With Module Thickness 1.50mm;  
 Unmating Force: 14gf Min. Per Pin Pair With Module Thickness 1.30mm;  
 Durability: 25 cycles;
- \*ELECTRICAL SPECIFICATION**  
 Contact Resistance: 10mΩ Max. Initial ,Change Value to 20mΩ Max;  
 Insulation Resistance: Apply 500V DC 1MΩ Min. ;  
 Withstand Voltage: 500V AC.
- \*ENVIRONMENTAL:**  
 Solderability: Compliance with EIA-364-52,Class 2,Catgory 3;  
 Vibration: Compliance with EIA-364-28;  
 Humidity: Compliance with EIA-364-21;  
 Thermal shock: Compliance with EIA-364-32;  
 Operating Temperature: -55°C TO +85°C;  
 Mechanical shock: Compliance with EIA-364-27.

**\*How To Order**



REV	Modify dimensions: 3.07 — 3.20			Drawing By	Date	WIN WIN PRECISION IND. CO., LTD.	
Units	mm	Scale	1:1	LZX	07/03-'20	TEL: 886-2-22994155 FAX: 886-2-22994157	
Tolerance Unless Otherwise Specified				Reviewed By	Date	Date	Title DDR4-288P 0.85mm Pitch Straddle Ejector Type
.X ~ ±0.35				LDF	07/03-'20	07/03-'20	
.XX ~ ±0.25				Approval By	Date	2 of 2	
.XXX ~ ±0.15				Nancy	07/07-'20	Third Angle Projection	
Angle ~ ± 3°						Drawing No.	WDD4S-288PS-AN-W114
						REV	G