

REV.	ECN.NO.	DATE
A	RELEASED	01/12/11
B	Modify the size	11/22-'17
C	Modify the description	11/21-'22

**NOTES:**

**\*Material**

Body: PPS or PBT, UL 94V-0.  
 Contacts: Phosphor Bronze.  
 Plating: Au Plating On Contact Area.  
 Sn(100u" Min.) Plating On Solder Tail.  
 Ni(40u" Min.) Underplating Overall.

**\*Mechanical**

Insertion Force: 196 Grams Max.  
 Withdrawal Force: 28 Grams Min.  
 Contact Retention: 1 lb. Min.  
 Durability: 100 Cycles.

**\*Electrical Specification**

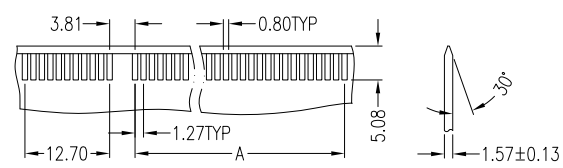
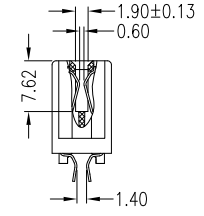
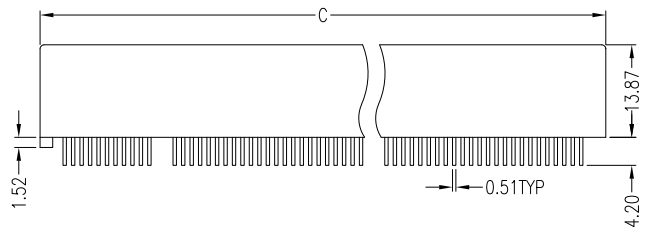
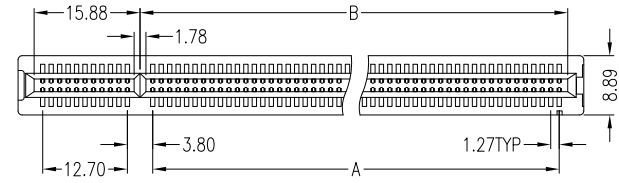
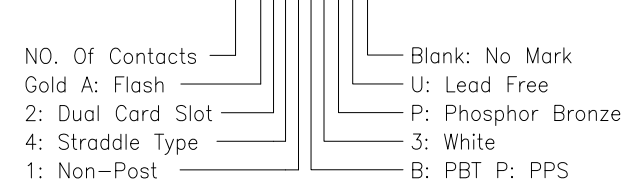
Current Rating: 1 Ampere.  
 Contact Resistance: 30 Milliohms Max.  
 Insulation Resistance: 1000 Megohms Min.  
 Dielectric Withstanding Voltage: 500 VAC.

**\*Environmental**

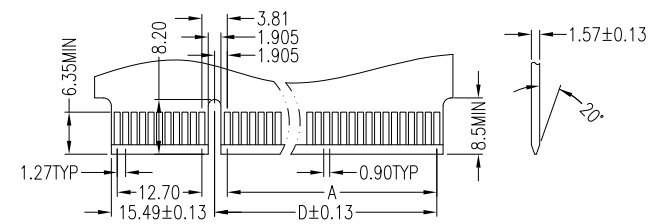
Operating Temperature: -55°C To +105°C.

**\*How To Order**

W2M-XXXA241B3PU



P.C.B Layout Two Bay Version (±0.05)



Daughter Card Requirements (±0.05)

	DIM"A"	DIM"B"	DIM"C"	DIM"D"
60 Pin	22.86	26.04	46.74	25.65
90 Pin	35.56	38.74	59.44	38.35
120 Pin	60.96	64.14	84.84	63.75

REV	Modify the description	Units	mm	Scale	1:1	Drawing By	Date	WIN WIN PRECISION IND. CO., LTD.							
						Rainy	11/21-'22	WINNING TEL: 886-2-22994155 FAX: 886-2-22994157							
						Reviewed By	Date	Date	11/21-'22	Title	Card Edge Slot Straddle Type	Drawing No.	MCA-120NS04-AN-W053	REV	C
						Rosh	12/02-'22	Sheet	1 of 1						
						Approval By	Date	Third Angle Projection							
						Nancy	12/06-'22								

A  
B  
C  
D

1 2 3 4 5 6 7 8

1 2 3 4 5 6 7 8