

REV.	ECN.NO.	DATE
A	RELEASED	01/31/07
D	Modify SPEC	10/20-'21
E	Modify the description	11/21-'22

NOTES:

\*Material

Body: PPS, UL 94V-0.

Contacts: Phosphor Bronze.

Plating: Au Plating On Contact Area.

Sn(100u" Min.) Plating On Solder Tail.

Ni(50u" Min.) Underplating Overall.

\*Mechanical

Insertion Force: 196 Grams Max.

Withdrawal Force: 28 Grams Min.

Contact Retention: 1 lb. Min.

Durability: 100 Cycles.

\*Electrical Specification

Current Rating: 1 Ampere.

Contact Resistance: 30 Milliohms Max.

Insulation Resistance: 1000 Megohms Min.

Dielectric Withstanding Voltage: 500 VAC.

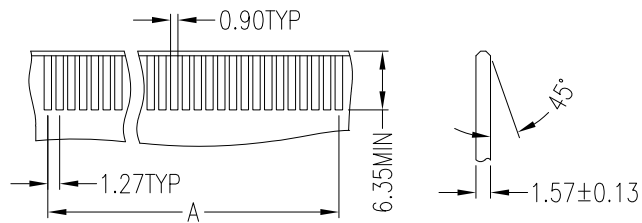
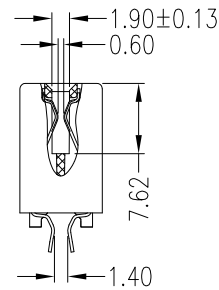
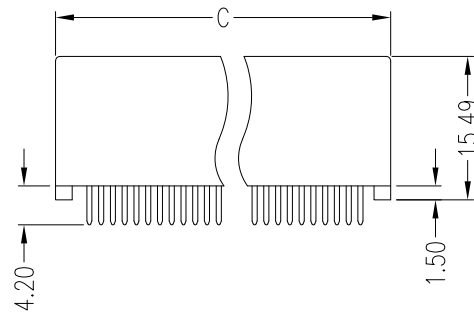
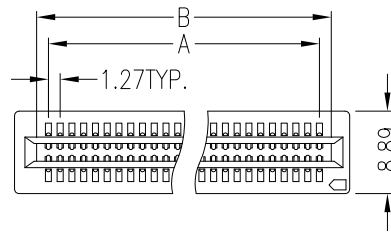
\*Environmental

Operating Temperature: -55°C To +105°C.

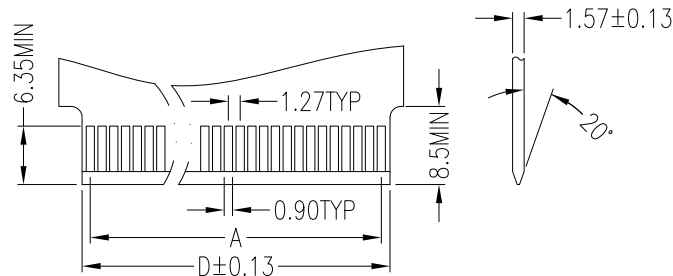
\*How To Order

W2C-XXXA141P1PU

- U: Lead Free
- P: Phosphor Bronze
- 1: Black
- P: PPS
- 1: Non-Post
- 4: Straddle Type
- 1: One Card Slot
- Gold A: Flash
- NO. of Contacts



P.C.B Layout Two Bay Version (±0.05)



Daughter Card Requirements (±0.05)

	DIM"A"	DIM"B"	DIM"C"	DIM"D"
10 Pin	5.08	7.62	10.80	7.37
26 Pin	15.24	17.78	20.96	17.53
40 Pin	24.13	26.67	29.85	26.42
50 Pin	30.48	33.02	36.20	32.77

REV	Modify the description			Drawing By	Date	WIN WIN PRECISION IND. CO., LTD.	
	Units	mm	Scale	1:1	Rainy	11/21-'22	TEL:886-2-22994155 FAX:886-2-22994157
Tolerance Unless Otherwise Specified				Reviewed By	Date	Date	Title MCA 1.27mm Straddle Type (Non-Post)
.X ~ ±0.35				Rosh	12/02-'22	11/21-'22	
.XX ~ ±0.25				Approval By	Date	1 of 1	
.XXX ~ ±0.15				Nancy	12/06-'22	Third Angle Projection	
Angle ~ ± 3'						Drawing No. MCA-ALLPS-AN-N029	
						REV	E